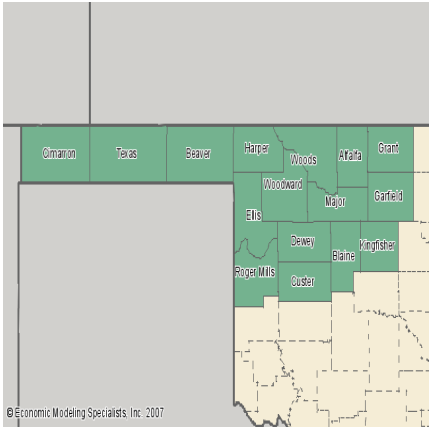


Southwestern Oklahoma State University

Center for Economic & Business Development

Economy Overview

Region: NWOK

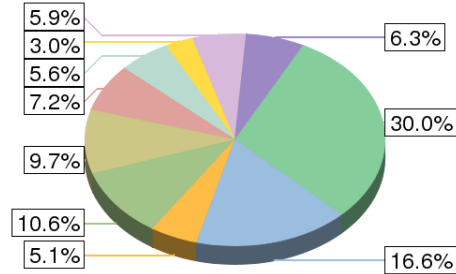
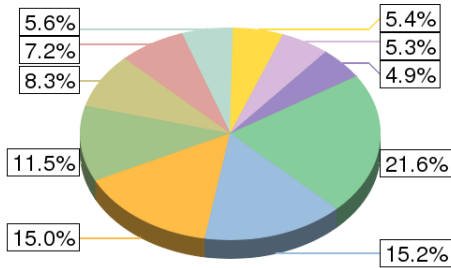


Industry Overview

2006 Industry Supersectors

2006 Regional Jobs

2006 State Jobs



■ Government	■ Agriculture, forestry, fishing and hunting
■ Retail trade	■ Health care and social assistance
■ Manufacturing	■ Other services, except public administration
■ Mining	■ Construction
■ Accommodation and food services	■ Other

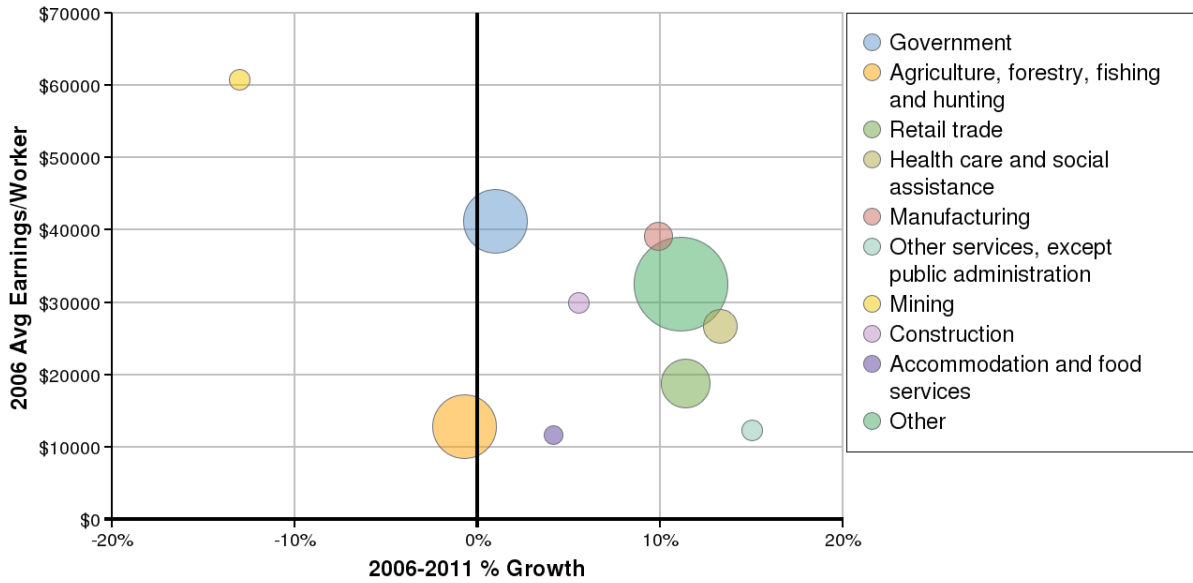
Source: Economic Modeling Specialists, 2007

Description	2006 Regional Jobs	% Regional Jobs	2006 State Jobs	% State Jobs
Agriculture, forestry, fishing and hunting	18,339	14.995%	105,290	5.107%
Mining	6,628	5.42%	61,693	2.992%
Utilities	695	0.568%	9,822	0.476%
Construction	6,434	5.261%	120,727	5.856%
Manufacturing	8,826	7.217%	148,913	7.223%
Wholesale trade	4,157	3.399%	61,983	3.006%
Retail trade	14,094	11.524%	218,161	10.582%
Transportation and warehousing	3,993	3.265%	68,443	3.32%
Information	1,533	1.253%	34,394	1.668%
Finance and insurance	3,725	3.046%	76,256	3.699%
Real estate and rental and leasing	2,580	2.11%	66,430	3.222%
Professional and technical services	4,132	3.379%	107,367	5.208%
Management of companies and enterprises	381	0.312%	12,507	0.607%
Administrative and waste services	3,754	3.07%	127,780	6.198%
Educational services	423	0.346%	25,596	1.242%
Health care and social assistance	10,183	8.326%	200,769	9.738%
Arts, entertainment, and recreation	1,047	0.856%	27,476	1.333%

Accommodation and food services	5,986	4.895%	129,950	6.303%
Other services, except public administration	6,818	5.575%	115,515	5.603%
Government	18,570	15.184%	342,610	16.618%

Source: Economic Modeling Specialists, Inc. - 5/07

2006-2011 Industry Supersectors



*Bubble size represents 2006 jobs in each supersector.

Source: Economic Modeling Specialists, 2007

Description	2006 Jobs	2011 Jobs	Growth	% Growth	2006 EPW
Agriculture, forestry, fishing and hunting	18,339	18,212	-127	-1%	\$12,696
Mining	6,628	5,764	-864	-13%	\$52,836
Utilities	695	780	85	12%	\$78,586
Construction	6,434	6,791	357	6%	\$31,544
Manufacturing	8,826	9,698	872	10%	\$42,968
Wholesale trade	4,157	3,885	-272	-7%	\$44,796
Retail trade	14,094	15,699	1,606	11%	\$20,989
Transportation and warehousing	3,993	4,157	164	4%	\$48,247
Information	1,533	1,523	-10	-1%	\$40,828
Finance and insurance	3,725	4,094	368	10%	\$32,443
Real estate and rental and leasing	2,580	3,109	529	21%	\$23,932
Professional and technical services	4,132	4,216	84	2%	\$29,350
Management of companies and enterprises	381	495	114	30%	\$53,323
Administrative and waste services	3,754	5,319	1,565	42%	\$30,157
Educational services	423	541	118	28%	\$20,643
Health care and social assistance	10,183	11,535	1,353	13%	\$30,265
Arts, entertainment, and recreation	1,047	1,238	191	18%	\$11,098

Accommodation and food services	5,986	6,234	248	4%	\$12,160
Other services, except public administration	6,818	7,842	1,024	15%	\$14,132
Government	18,570	18,755	185	1%	\$41,638

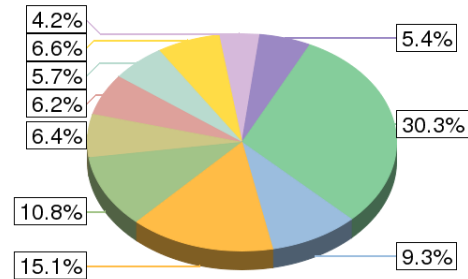
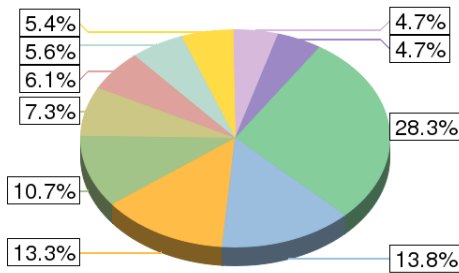
Source: Economic Modeling Specialists, Inc. - 5/07

Occupation Overview

2006 Occupational Supersectors

2006 Regional Jobs

2006 State Jobs



Management occupations	Office and administrative support occupations
Sales and related occupations	Transportation and material moving occupat...
Production occupations	Construction and extraction occupations
Food preparation and serving related occup...	Installation, maintenance, and repair occu...
Education, training, and library occupations	Other

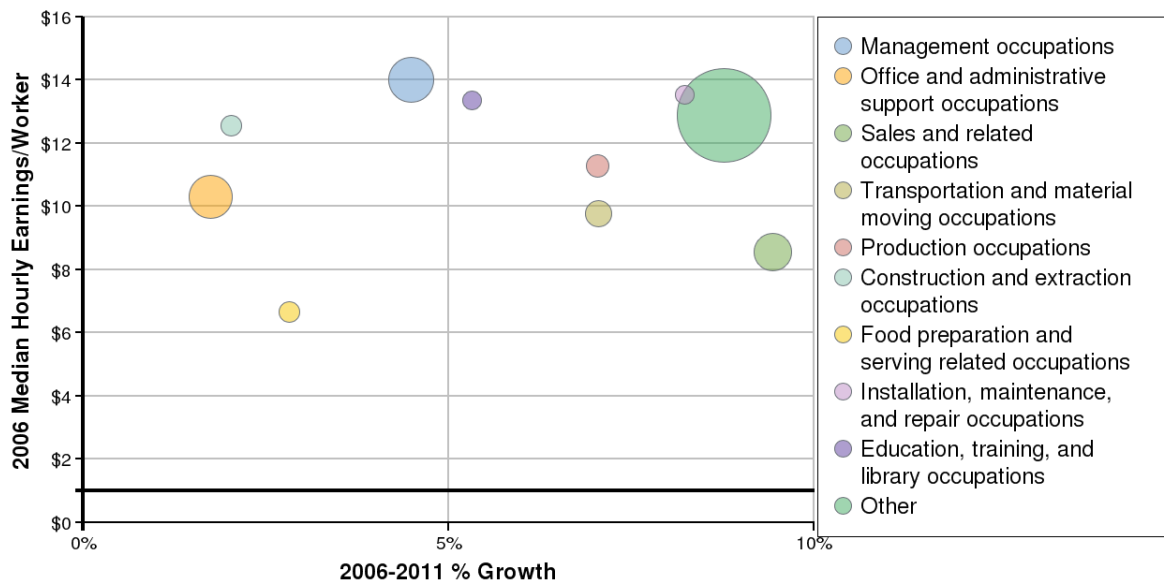
Source: Economic Modeling Specialists, 2007

SOC Code	Description	2006 Regional Jobs	% Regional Jobs	2006 State Jobs	% State Jobs
11-0000	Management occupations	16,904	13.829%	191,943	9.312%
13-0000	Business and financial operations occupations	3,254	2.662%	79,718	3.867%
15-0000	Computer and mathematical science occupations	1,004	0.821%	29,960	1.453%
17-0000	Architecture and engineering occupations	1,107	0.906%	29,362	1.424%
19-0000	Life, physical, and social science occupations	1,016	0.831%	18,952	0.919%
21-0000	Community and social services occupations	1,532	1.253%	26,091	1.266%
23-0000	Legal occupations	778	0.636%	16,930	0.821%
25-0000	Education, training, and library occupations	5,730	4.688%	111,034	5.386%

27-0000	Arts, design, entertainment, sports, and media occupations	1,458	1.193%	34,849	1.691%
29-0000	Healthcare practitioners and technical occupations	5,118	4.187%	96,991	4.705%
31-0000	Healthcare support occupations	2,606	2.132%	51,325	2.49%
33-0000	Protective service occupations	1,572	1.286%	35,095	1.703%
35-0000	Food preparation and serving related occupations	6,641	5.433%	136,315	6.613%
37-0000	Building and grounds cleaning and maintenance occupations	5,038	4.121%	76,493	3.711%
39-0000	Personal care and service occupations	4,445	3.636%	67,737	3.286%
41-0000	Sales and related occupations	13,106	10.722%	222,897	10.813%
43-0000	Office and administrative support occupations	16,202	13.254%	311,432	15.108%
45-0000	Farming, fishing, and forestry occupations	3,722	3.045%	23,847	1.157%
47-0000	Construction and extraction occupations	6,872	5.622%	117,350	5.693%
49-0000	Installation, maintenance, and repair occupations	5,802	4.746%	87,454	4.243%
51-0000	Production occupations	7,425	6.074%	126,808	6.152%
53-0000	Transportation and material moving occupations	8,956	7.327%	132,323	6.419%
55-0000	Military Occupations	1,951	1.596%	36,437	1.768%

Source: Economic Modeling Specialists, Inc. - 5/07

2006-2011 Occupational Supersectors



*Bubble size represents 2006 jobs in each supersector.

Source: Economic Modeling Specialists, 2007

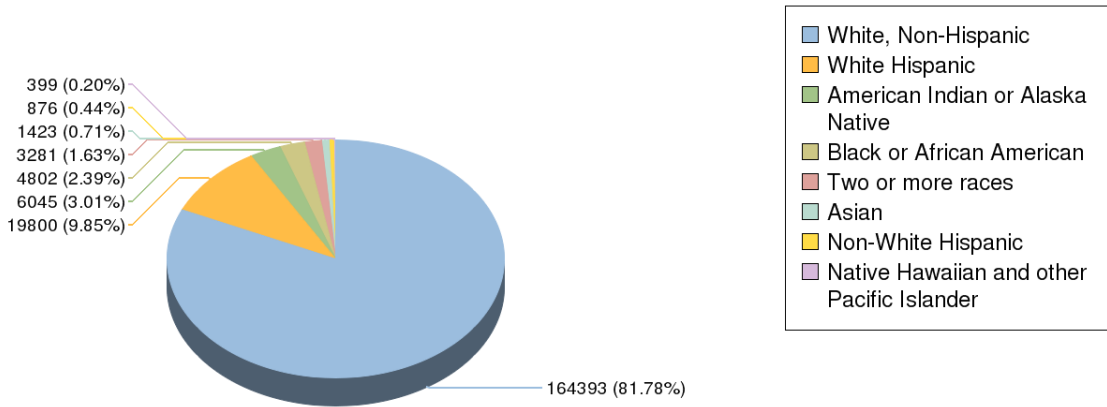
SOC Code	Description	2006 Jobs	2011 Jobs	Growth	% Growth	2006 EPW
----------	-------------	-----------	-----------	--------	----------	----------

11-0000	Management occupations	16,904	17,662	758	4%	\$14.65
13-0000	Business and financial operations occupations	3,254	3,523	269	8%	\$16.39
15-0000	Computer and mathematical science occupations	1,004	1,234	230	23%	\$19.48
17-0000	Architecture and engineering occupations	1,107	1,147	40	4%	\$25.90
19-0000	Life, physical, and social science occupations	1,016	1,029	13	1%	\$20.42
21-0000	Community and social services occupations	1,532	1,729	198	13%	\$12.80
23-0000	Legal occupations	778	739	-39	-5%	\$21.37
25-0000	Education, training, and library occupations	5,730	6,035	305	5%	\$14.07
27-0000	Arts, design, entertainment, sports, and media occupations	1,458	1,490	32	2%	\$12.36
29-0000	Healthcare practitioners and technical occupations	5,118	5,586	469	9%	\$24.29
31-0000	Healthcare support occupations	2,606	2,920	314	12%	\$8.60
33-0000	Protective service occupations	1,572	1,672	100	6%	\$12.45
35-0000	Food preparation and serving related occupations	6,641	6,828	187	3%	\$6.84
37-0000	Building and grounds cleaning and maintenance occupations	5,038	5,887	849	17%	\$6.91
39-0000	Personal care and service occupations	4,445	5,147	702	16%	\$6.95
41-0000	Sales and related occupations	13,106	14,342	1,236	9%	\$9.36
43-0000	Office and administrative support occupations	16,202	16,483	282	2%	\$10.49
45-0000	Farming, fishing, and forestry occupations	3,722	3,712	-11	0%	\$6.34
47-0000	Construction and extraction occupations	6,872	7,011	140	2%	\$12.82
49-0000	Installation, maintenance, and repair occupations	5,802	6,280	478	8%	\$14.64
51-0000	Production occupations	7,425	7,948	523	7%	\$12.08
53-0000	Transportation and material moving occupations	8,956	9,587	631	7%	\$10.48
55-0000	Military Occupations	1,951	1,821	-131	-7%	\$26.93

Source: Economic Modeling Specialists, Inc. - 5/07

Demographic Overview

2006 Population by Race/Ethnicity

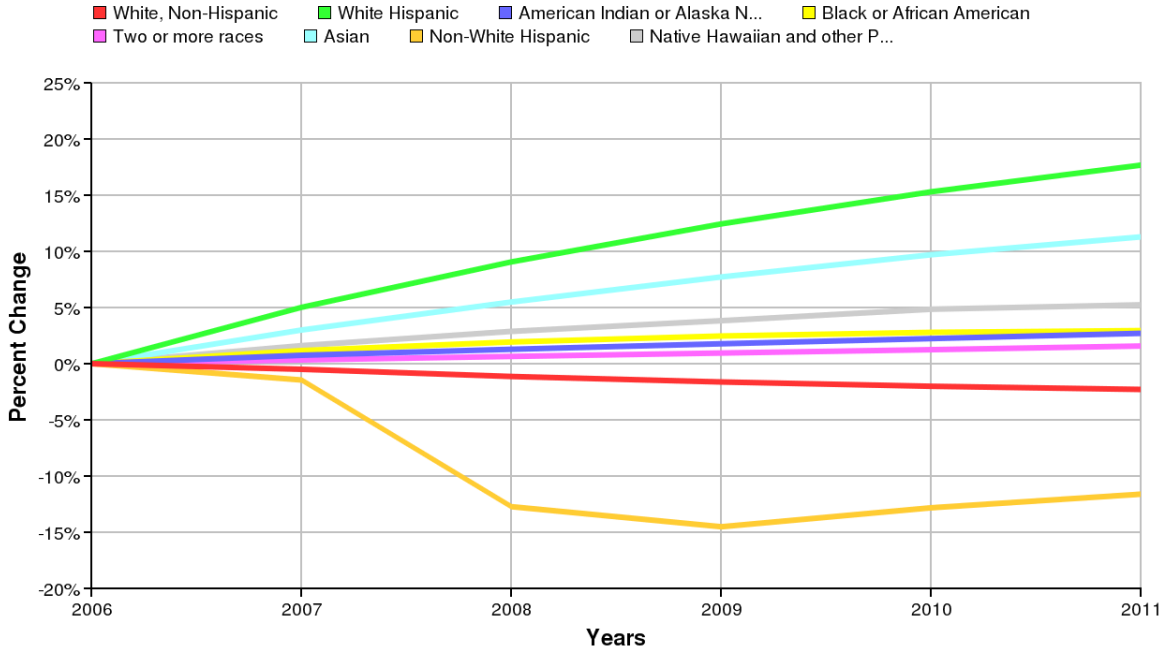


Source: Economic Modeling Specialists, 2007

Ethnicity	2006 Population	% of Region
White, Non-Hispanic	164,393	81.78%
White Hispanic	19,800	9.85%
American Indian or Alaska Native	6,045	3.01%
Black or African American	4,802	2.39%
Two or more races	3,281	1.63%
Asian	1,423	0.71%
Non-White Hispanic	876	0.44%
Native Hawaiian and other Pacific Islander	399	0.2%

Source: Economic Modeling Specialists, Inc. - 5/07

2006-2011 Percent Population Change by Race/Ethnicity

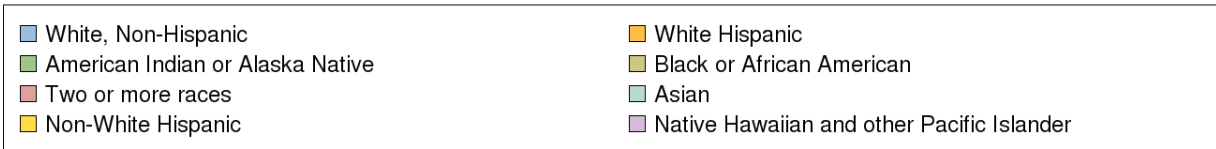
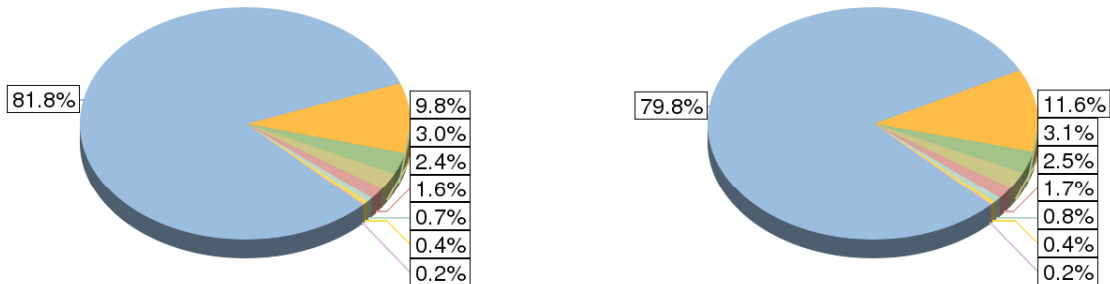


Source: Economic Modeling Specialists, 2007

Population Change by Race/Ethnicity

2006

2011



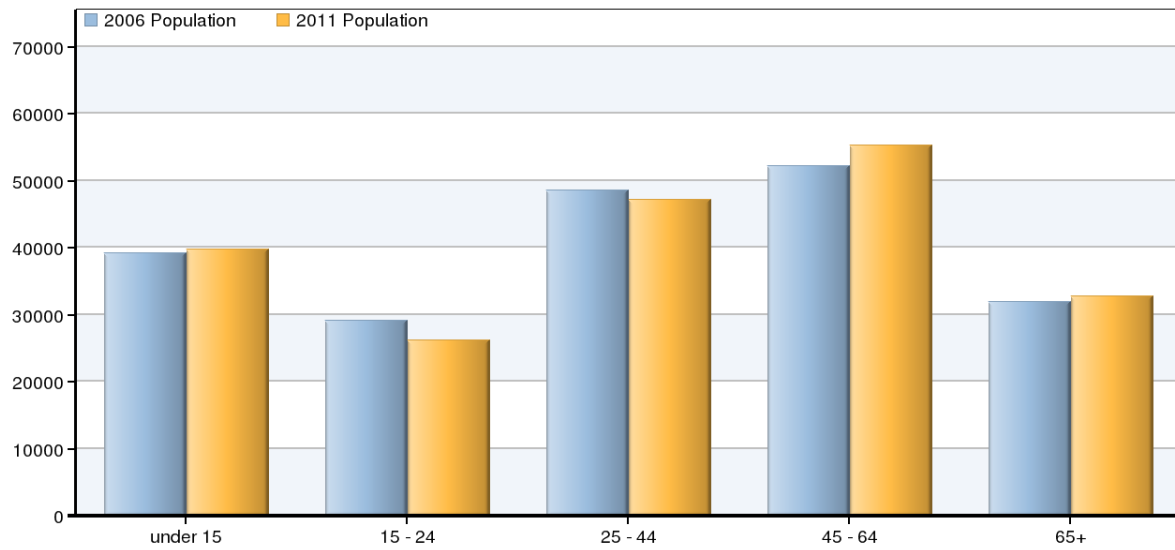
Source: Economic Modeling Specialists, 2007

Race/Ethnicity	2006 Population	2011 Population	Change	% Change
White, Non-Hispanic	164,393	160,624	-3,770	-2%
White Hispanic	19,800	23,299	3,500	18%
American Indian or Alaska Native	6,045	6,208	163	3%

Black or African American	4,802	4,943	141	3%
Two or more races	3,281	3,333	52	2%
Asian	1,423	1,584	161	11%
Non-White Hispanic	876	774	-102	-12%
Native Hawaiian and other Pacific Islander	399	420	21	5%

Source: Economic Modeling Specialists, Inc. - 5/07

2006-2011 Population Change by Age



Source: Economic Modeling Specialists, 2007

Age	2006 Population	2011 Population	Change	% Change
under 15	39,253	39,754	502	1%
15 - 24	29,105	26,141	-2,964	-10%
25 - 44	48,620	47,151	-1,469	-3%
45 - 64	52,177	55,363	3,186	6%
65+	31,864	32,775	911	3%

Source: Economic Modeling Specialists, Inc. - 5/07