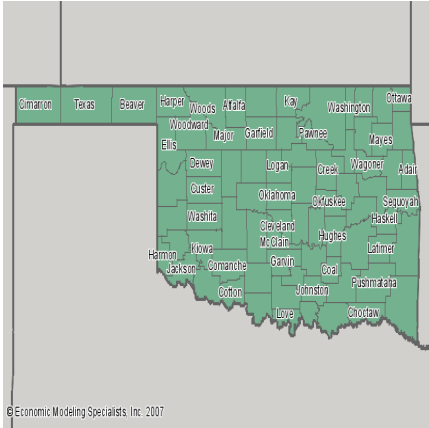


# Southwestern Oklahoma State University

## Center for Economic & Business Development

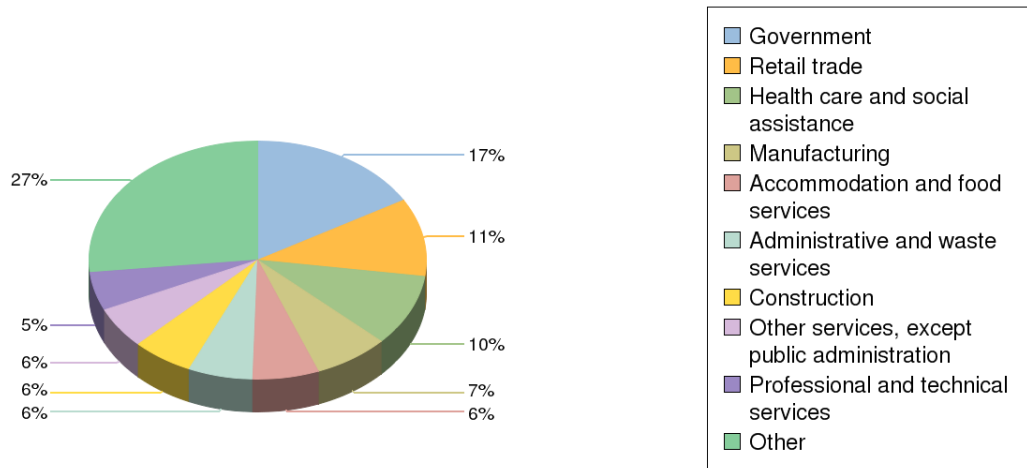
### Economy Overview

### Region: OK - State



## Industry Overview

### 2006 Industry Supersectors

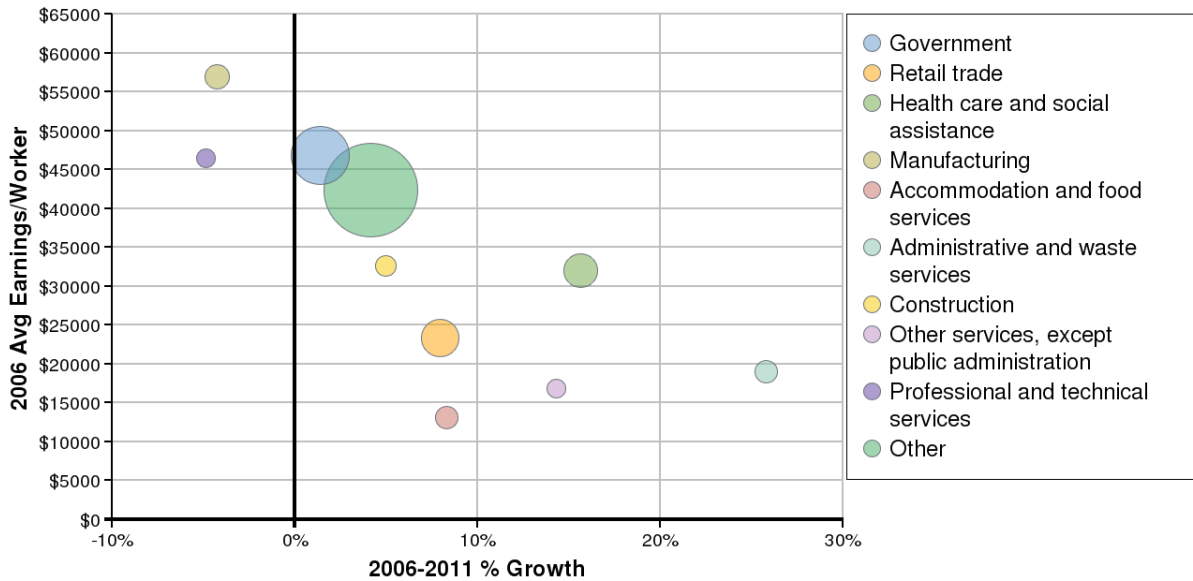


Source: Economic Modeling Specialists, 2007

Description	2006 Regional Jobs	% Regional Jobs
Agriculture, forestry, fishing and hunting	105,290	5.107%
Mining	61,692	2.993%
Utilities	9,822	0.476%
Construction	120,727	5.856%
Manufacturing	148,748	7.216%
Wholesale trade	61,982	3.007%
Retail trade	218,161	10.583%
Transportation and warehousing	68,430	3.319%
Information	34,387	1.668%
Finance and insurance	76,256	3.699%
Real estate and rental and leasing	66,430	3.222%
Professional and technical services	107,367	5.208%
Management of companies and enterprises	12,507	0.607%
Administrative and waste services	127,780	6.198%
Educational services	25,596	1.242%
Health care and social assistance	200,769	9.739%
Arts, entertainment, and recreation	27,476	1.333%
Accommodation and food services	129,950	6.304%
Other services, except public administration	115,515	5.603%
Government	342,610	16.619%

Source: Economic Modeling Specialists, Inc. - 5/07

## 2006-2011 Industry Supersectors



\*Bubble size represents 2006 jobs in each supersector.

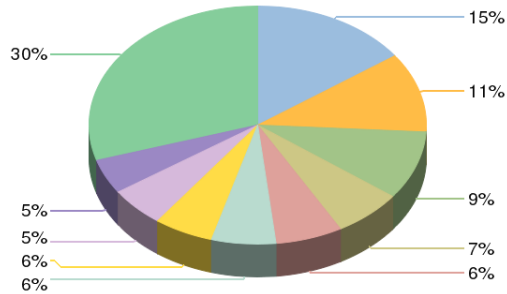
Source: Economic Modeling Specialists, 2007

Description	2006 Jobs	2011 Jobs	Growth	% Growth	2006 EPW
Agriculture, forestry, fishing and hunting	105,290	105,465	175	0%	\$9,405
Mining	61,692	55,836	-5,856	-9%	\$100,778
Utilities	9,822	9,792	-30	0%	\$116,251
Construction	120,727	126,753	6,025	5%	\$34,247
Manufacturing	148,748	142,384	-6,364	-4%	\$54,552
Wholesale trade	61,982	59,912	-2,070	-3%	\$53,673
Retail trade	218,161	235,460	17,300	8%	\$25,179
Transportation and warehousing	68,430	68,310	-119	0%	\$49,686
Information	34,387	36,189	1,802	5%	\$51,643
Finance and insurance	76,256	83,221	6,965	9%	\$46,156
Real estate and rental and leasing	66,430	78,157	11,727	18%	\$29,578
Professional and technical services	107,367	102,134	-5,234	-5%	\$44,197
Management of companies and enterprises	12,507	14,387	1,879	15%	\$70,256
Administrative and waste services	127,780	160,768	32,988	26%	\$23,961
Educational services	25,596	30,168	4,571	18%	\$22,737
Health care and social assistance	200,769	232,206	31,437	16%	\$36,994
Arts, entertainment, and recreation	27,476	31,148	3,672	13%	\$17,763
Accommodation and food services	129,950	140,736	10,786	8%	\$14,213
Other services, except public administration	115,515	132,066	16,552	14%	\$19,316
Government	342,610	347,311	4,701	1%	\$47,468

Source: Economic Modeling Specialists, Inc. - 5/07

### Occupation Overview

## 2006 Occupational Supersectors



- Office and administrative support occupations
- Sales and related occupations
- Management occupations
- Food preparation and serving related occupations
- Transportation and material moving occupations
- Production occupations
- Construction and extraction occupations
- Education, training, and library occupations
- Healthcare practitioners and technical occupations
- Other

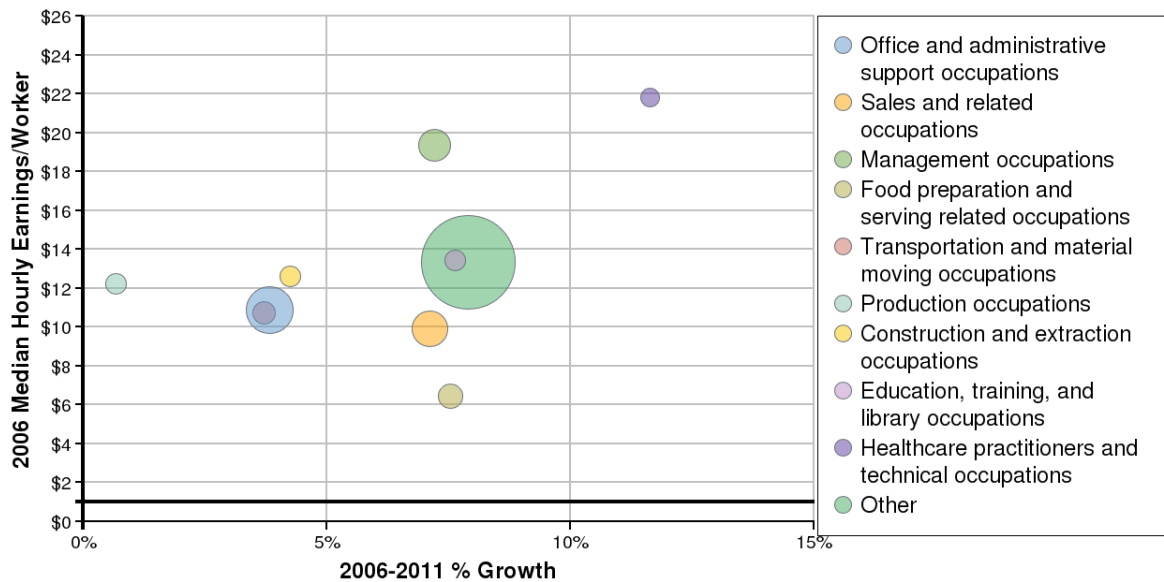
Source: Economic Modeling Specialists, 2007

SOC Code	Description	2006 Regional Jobs	% Regional Jobs
11-0000	Management occupations	191,943	9.312%
13-0000	Business and financial operations occupations	79,718	3.867%
15-0000	Computer and mathematical science occupations	29,960	1.453%
17-0000	Architecture and engineering occupations	29,362	1.424%
19-0000	Life, physical, and social science occupations	18,952	0.919%
21-0000	Community and social services occupations	26,091	1.266%
23-0000	Legal occupations	16,930	0.821%
25-0000	Education, training, and library occupations	111,034	5.386%
27-0000	Arts, design, entertainment, sports, and media occupations	34,849	1.691%
29-0000	Healthcare practitioners and technical occupations	96,991	4.705%
31-0000	Healthcare support occupations	51,325	2.49%
33-0000	Protective service occupations	35,095	1.703%
35-0000	Food preparation and serving related occupations	136,315	6.613%
37-0000	Building and grounds cleaning and maintenance occupations	76,493	3.711%
39-0000	Personal care and service occupations	67,737	3.286%
41-0000	Sales and related occupations	222,897	10.813%
43-0000	Office and administrative support occupations	311,432	15.108%

45-0000	Farming, fishing, and forestry occupations	23,847	1.157%
47-0000	Construction and extraction occupations	117,350	5.693%
49-0000	Installation, maintenance, and repair occupations	87,454	4.243%
51-0000	Production occupations	126,808	6.152%
53-0000	Transportation and material moving occupations	132,323	6.419%
55-0000	Military Occupations	36,437	1.768%

Source: Economic Modeling Specialists, Inc. - 5/07

## 2006-2011 Occupational Supersectors



\*Bubble size represents 2006 jobs in each supersector.

Source: Economic Modeling Specialists, 2007

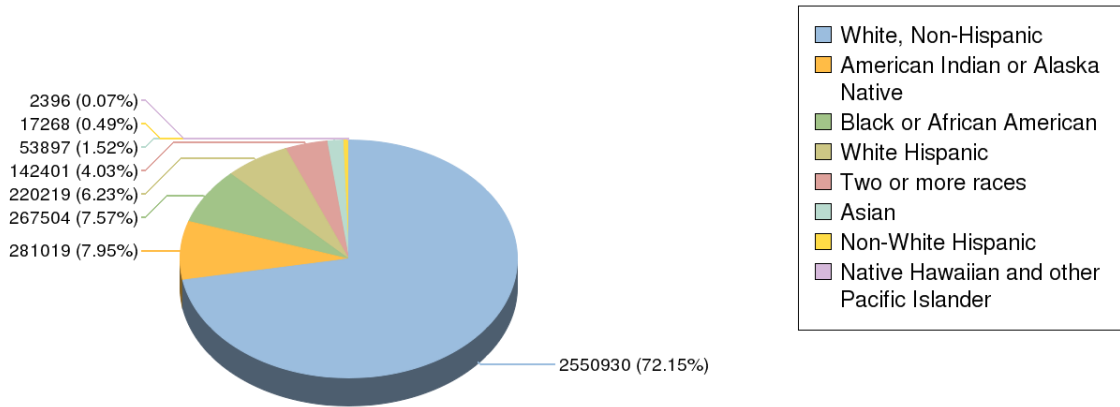
SOC Code	Description	2006 Jobs	2011 Jobs	Growth	% Growth	2006 EPW
11-0000	Management occupations	191,943	205,791	13,847	7%	\$20.75
13-0000	Business and financial operations occupations	79,718	85,761	6,042	8%	\$18.44
15-0000	Computer and mathematical science occupations	29,960	32,566	2,607	9%	\$22.51
17-0000	Architecture and engineering occupations	29,362	28,447	-915	-3%	\$25.40
19-0000	Life, physical, and social science occupations	18,952	19,214	262	1%	\$20.88
21-0000	Community and social services occupations	26,091	29,545	3,455	13%	\$13.53
23-0000	Legal occupations	16,930	16,247	-683	-4%	\$25.51
25-0000	Education, training, and library occupations	111,034	119,510	8,476	8%	\$14.48
27-0000	Arts, design, entertainment, sports, and media occupations	34,849	36,335	1,487	4%	\$12.65

29-0000	Healthcare practitioners and technical occupations	96,991	108,270	11,279	12%	\$24.37
31-0000	Healthcare support occupations	51,325	60,232	8,908	17%	\$9.28
33-0000	Protective service occupations	35,095	37,837	2,743	8%	\$12.75
35-0000	Food preparation and serving related occupations	136,315	146,589	10,275	8%	\$6.96
37-0000	Building and grounds cleaning and maintenance occupations	76,493	87,596	11,103	15%	\$7.42
39-0000	Personal care and service occupations	67,737	79,282	11,545	17%	\$6.90
41-0000	Sales and related occupations	222,897	238,737	15,840	7%	\$10.65
43-0000	Office and administrative support occupations	311,432	323,362	11,930	4%	\$11.29
45-0000	Farming, fishing, and forestry occupations	23,847	23,967	121	1%	\$7.00
47-0000	Construction and extraction occupations	117,350	122,329	4,979	4%	\$13.13
49-0000	Installation, maintenance, and repair occupations	87,454	91,720	4,267	5%	\$15.25
51-0000	Production occupations	126,808	127,663	855	1%	\$12.30
53-0000	Transportation and material moving occupations	132,323	137,227	4,904	4%	\$11.16
55-0000	Military Occupations	36,437	33,993	-2,443	-7%	\$23.73

Source: Economic Modeling Specialists, Inc. - 5/07

## Demographic Overview

### 2006 Population by Race/Ethnicity

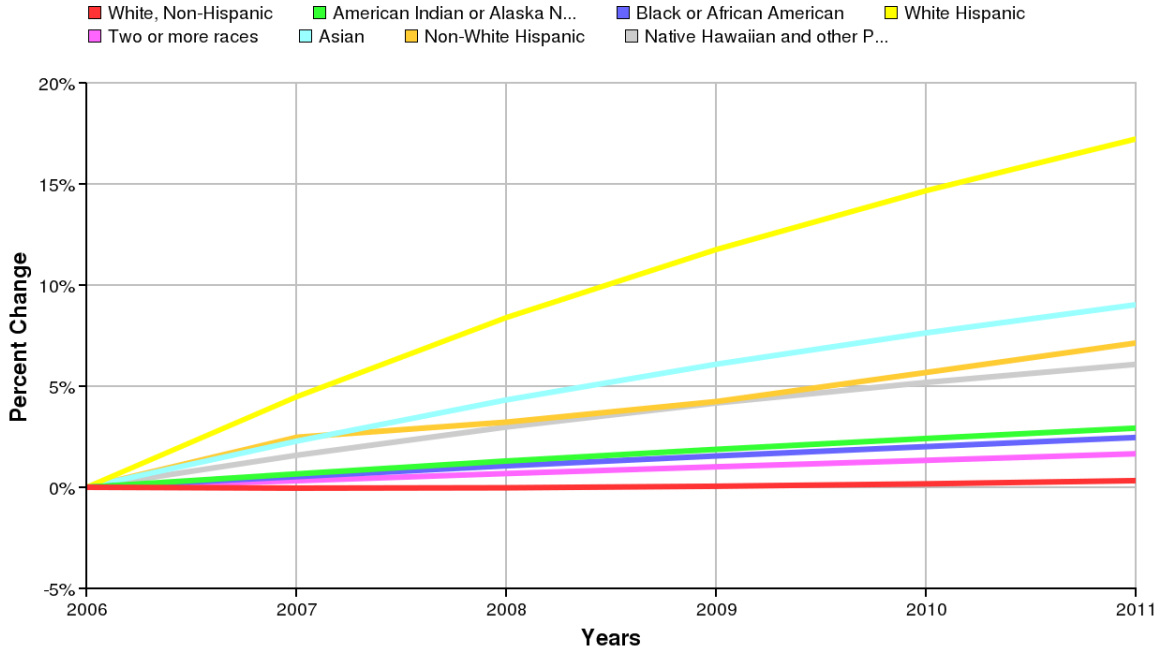


Source: Economic Modeling Specialists, 2007

Ethnicity	2006 Population	% of Region
White, Non-Hispanic	2,550,930	72.15%
American Indian or Alaska Native	281,019	7.95%
Black or African American	267,504	7.57%
White Hispanic	220,219	6.23%
Two or more races	142,401	4.03%
Asian	53,897	1.52%
Non-White Hispanic	17,268	0.49%
Native Hawaiian and other Pacific Islander	2,396	0.07%

Source: Economic Modeling Specialists, Inc. - 5/07

## 2006-2011 Percent Population Change by Race/Ethnicity

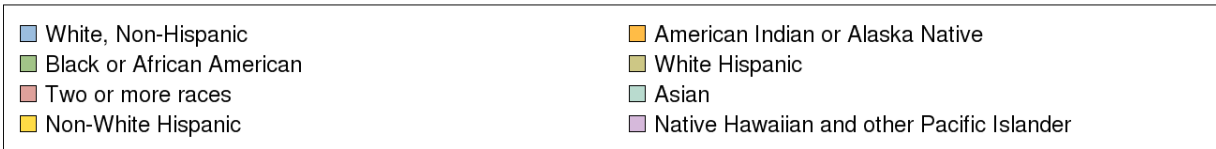
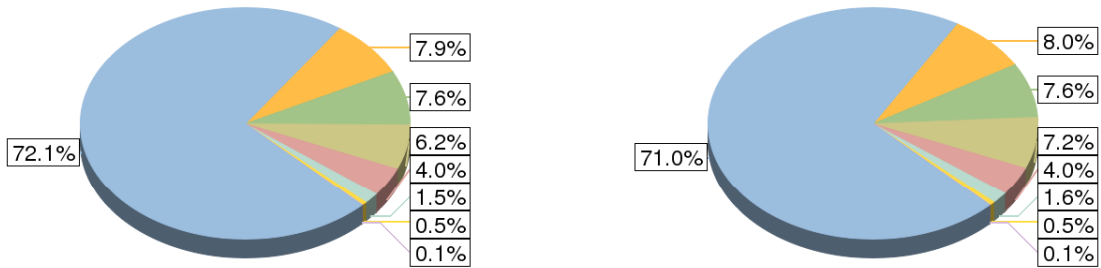


Source: Economic Modeling Specialists, 2007

## Population Change by Race/Ethnicity

2006

2011



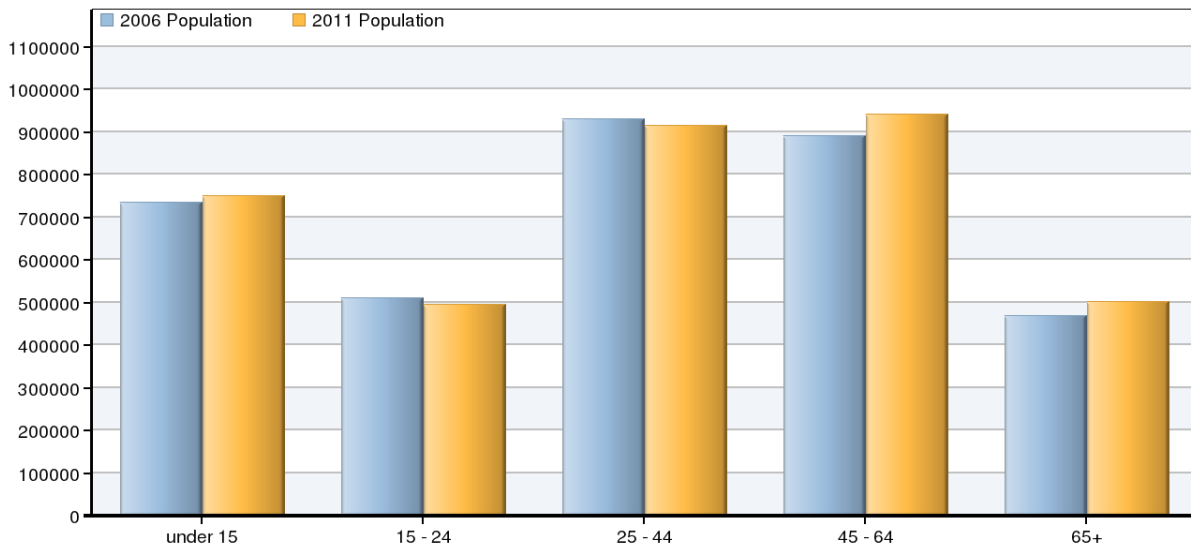
Source: Economic Modeling Specialists, 2007

Race/Ethnicity	2006 Population	2011 Population	Change	% Change
White, Non-Hispanic	2,550,930	2,559,273	8,343	0%
American Indian or Alaska Native	281,019	289,237	8,218	3%
Black or African American	267,504	274,089	6,584	2%

White Hispanic	220,219	258,151	37,933	17%
Two or more races	142,401	144,758	2,357	2%
Asian	53,897	58,762	4,865	9%
Non-White Hispanic	17,268	18,500	1,232	7%
Native Hawaiian and other Pacific Islander	2,396	2,542	146	6%

Source: Economic Modeling Specialists, Inc. - 5/07

## 2006-2011 Population Change by Age



Source: Economic Modeling Specialists, 2007

Age	2006 Population	2011 Population	Change	% Change
under 15	735,850	750,637	14,787	2%
15 - 24	509,995	495,222	-14,773	-3%
25 - 44	930,226	915,690	-14,536	-2%
45 - 64	890,975	941,609	50,634	6%
65+	468,588	502,154	33,567	7%

Source: Economic Modeling Specialists, Inc. - 5/07