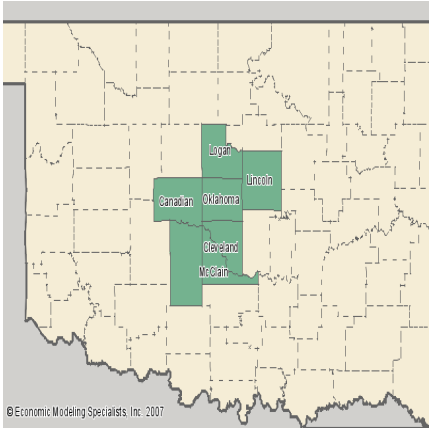


# Southwestern Oklahoma State University

## Center for Economic & Business Development

### Economy Overview

### Region: OKC MSA

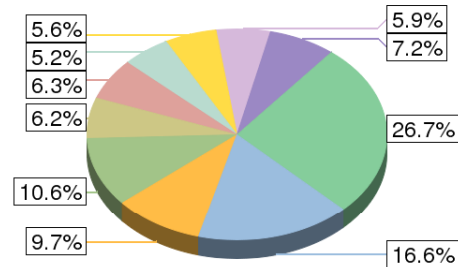
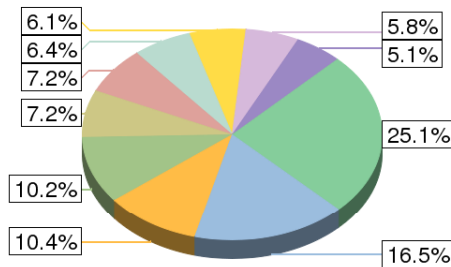


## Industry Overview

### 2006 Industry Supersectors

2006 Regional Jobs

2006 State Jobs



Government	Health care and social assistance
Retail trade	Administrative and waste services
Accommodation and food services	Professional and technical services
Other services, except public administration	Construction
Manufacturing	Other

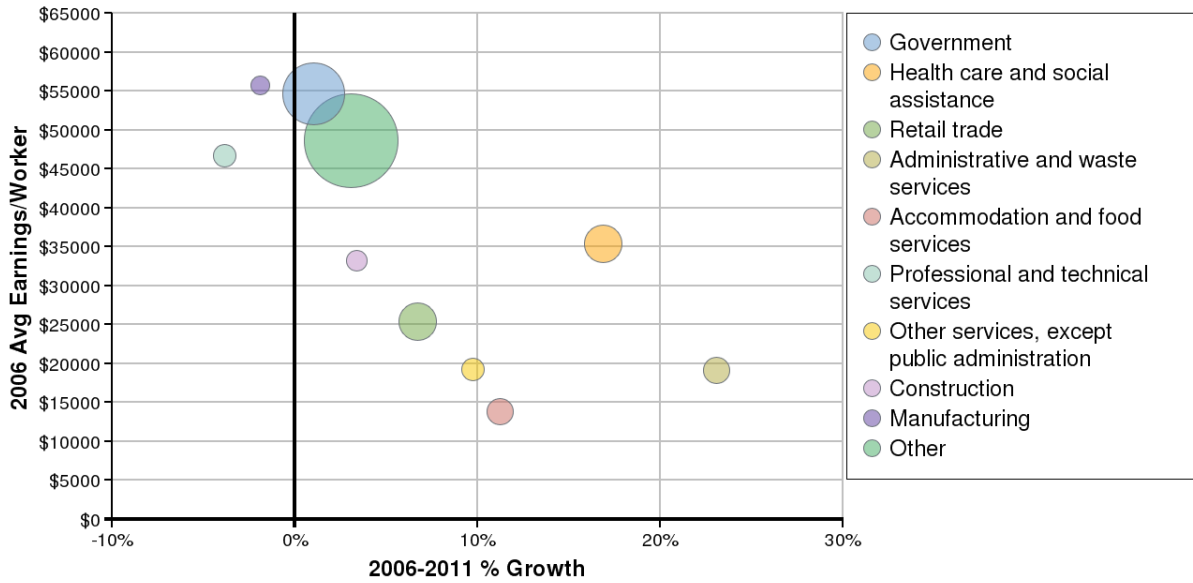
Source: Economic Modeling Specialists, 2007

Description	2006 Regional Jobs	% Regional Jobs	2006 State Jobs	% State Jobs
Agriculture, forestry, fishing and hunting	13,070	1.777%	105,290	5.107%
Mining	21,754	2.958%	61,693	2.992%
Utilities	2,922	0.397%	9,822	0.476%
Construction	42,414	5.768%	120,727	5.856%
Manufacturing	37,793	5.14%	148,913	7.223%
Wholesale trade	24,884	3.384%	61,983	3.006%
Retail trade	75,329	10.244%	218,161	10.582%
Transportation and warehousing	21,720	2.954%	68,443	3.32%
Information	14,420	1.961%	34,394	1.668%
Finance and insurance	29,821	4.055%	76,256	3.699%
Real estate and rental and leasing	29,188	3.969%	66,430	3.222%
Professional and technical services	46,731	6.355%	107,367	5.208%
Management of companies and enterprises	4,790	0.651%	12,507	0.607%
Administrative and waste services	52,992	7.207%	127,780	6.198%
Educational services	10,651	1.448%	25,596	1.242%
Health care and social assistance	76,147	10.356%	200,769	9.738%
Arts, entertainment, and recreation	11,466	1.559%	27,476	1.333%

Accommodation and food services	52,832	7.185%	129,950	6.303%
Other services, except public administration	45,053	6.127%	115,515	5.603%
Government	121,349	16.503%	342,610	16.618%

Source: Economic Modeling Specialists, Inc. - 5/07

## 2006-2011 Industry Supersectors



\*Bubble size represents 2006 jobs in each supersector.

Source: Economic Modeling Specialists, 2007

Description	2006 Jobs	2011 Jobs	Growth	% Growth	2006 EPW
Agriculture, forestry, fishing and hunting	13,070	13,245	175	1%	\$9,161
Mining	21,754	19,627	-2,127	-10%	\$119,358
Utilities	2,922	2,558	-364	-12%	\$130,977
Construction	42,414	43,842	1,429	3%	\$34,280
Manufacturing	37,793	37,072	-721	-2%	\$54,628
Wholesale trade	24,884	23,937	-947	-4%	\$51,740
Retail trade	75,329	80,381	5,052	7%	\$27,127
Transportation and warehousing	21,720	20,635	-1,085	-5%	\$48,740
Information	14,420	14,848	427	3%	\$49,396
Finance and insurance	29,821	30,604	783	3%	\$47,008
Real estate and rental and leasing	29,188	33,882	4,694	16%	\$29,466
Professional and technical services	46,731	44,923	-1,808	-4%	\$44,943
Management of companies and enterprises	4,790	5,562	772	16%	\$87,779
Administrative and waste services	52,992	65,233	12,241	23%	\$23,552
Educational services	10,651	13,047	2,395	22%	\$21,881
Health care and social assistance	76,147	89,003	12,856	17%	\$41,303
Arts, entertainment, and recreation	11,466	12,464	998	9%	\$17,129

Accommodation and food services	52,832	58,763	5,930	11%	\$15,408
Other services, except public administration	45,053	49,431	4,379	10%	\$21,117
Government	121,349	122,619	1,270	1%	\$55,236

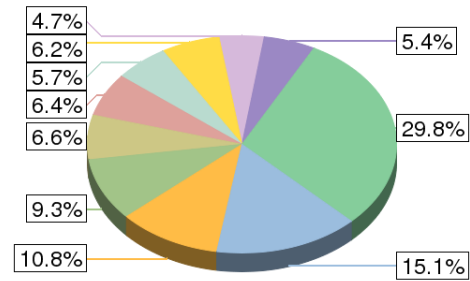
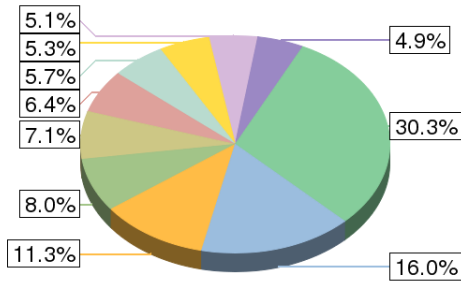
Source: Economic Modeling Specialists, Inc. - 5/07

## Occupation Overview

### 2006 Occupational Supersectors

2006 Regional Jobs

2006 State Jobs



Office and administrative support occupations	Sales and related occupations
Management occupations	Food preparation and serving related occupations
Transportation and material moving occupations	Construction and extraction occupations
Production occupations	Healthcare practitioners and technical occupations
Education, training, and library occupations	Other

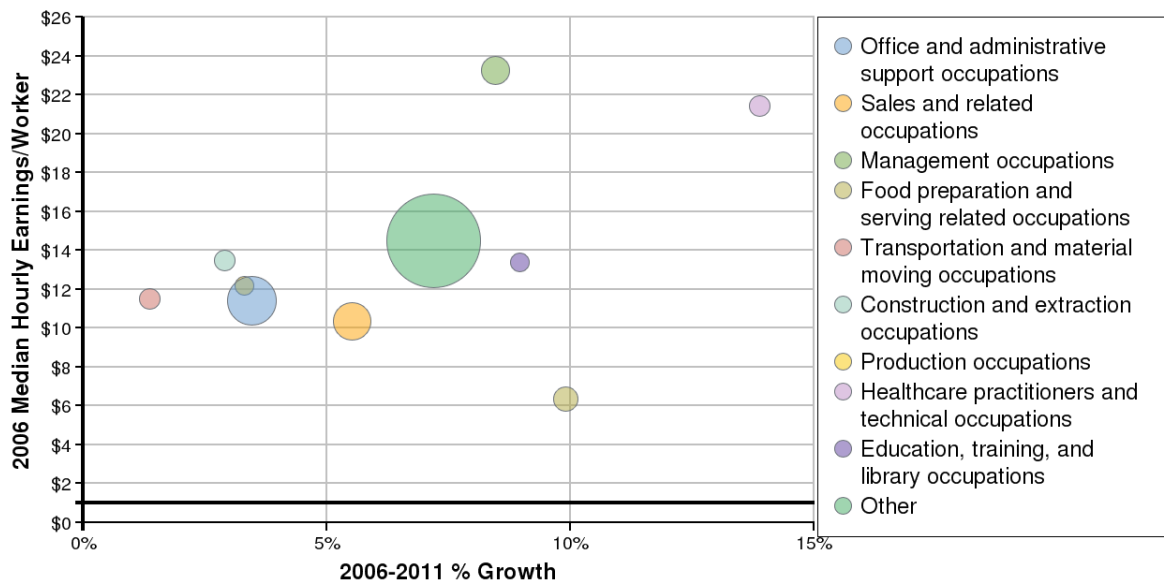
Source: Economic Modeling Specialists, 2007

SOC Code	Description	2006 Regional Jobs	% Regional Jobs	2006 State Jobs	% State Jobs
11-0000	Management occupations	58,509	7.957%	191,943	9.312%
13-0000	Business and financial operations occupations	32,546	4.426%	79,718	3.867%
15-0000	Computer and mathematical science occupations	12,745	1.733%	29,960	1.453%
17-0000	Architecture and engineering occupations	11,886	1.616%	29,362	1.424%
19-0000	Life, physical, and social science occupations	7,342	0.998%	18,952	0.919%
21-0000	Community and social services occupations	7,976	1.085%	26,091	1.266%
23-0000	Legal occupations	7,481	1.017%	16,930	0.821%
25-0000	Education, training, and library occupations	35,724	4.858%	111,034	5.386%

27-0000	Arts, design, entertainment, sports, and media occupations	13,682	1.861%	34,849	1.691%
29-0000	Healthcare practitioners and technical occupations	37,481	5.097%	96,991	4.705%
31-0000	Healthcare support occupations	16,001	2.176%	51,325	2.49%
33-0000	Protective service occupations	12,627	1.717%	35,095	1.703%
35-0000	Food preparation and serving related occupations	52,145	7.091%	136,315	6.613%
37-0000	Building and grounds cleaning and maintenance occupations	28,457	3.87%	76,493	3.711%
39-0000	Personal care and service occupations	24,800	3.373%	67,737	3.286%
41-0000	Sales and related occupations	83,422	11.345%	222,897	10.813%
43-0000	Office and administrative support occupations	117,553	15.987%	311,432	15.108%
45-0000	Farming, fishing, and forestry occupations	3,612	0.491%	23,847	1.157%
47-0000	Construction and extraction occupations	41,736	5.676%	117,350	5.693%
49-0000	Installation, maintenance, and repair occupations	31,304	4.257%	87,454	4.243%
51-0000	Production occupations	39,025	5.307%	126,808	6.152%
53-0000	Transportation and material moving occupations	46,981	6.389%	132,323	6.419%
55-0000	Military Occupations	12,289	1.671%	36,437	1.768%

Source: Economic Modeling Specialists, Inc. - 5/07

## 2006-2011 Occupational Supersectors



\*Bubble size represents 2006 jobs in each supersector.

Source: Economic Modeling Specialists, 2007

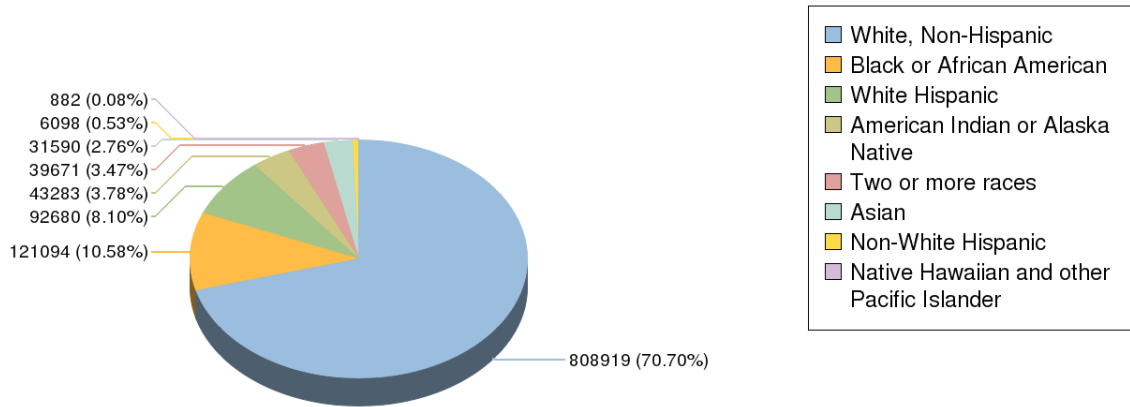
SOC Code	Description	2006 Jobs	2011 Jobs	Growth	% Growth	2006 EPW
----------	-------------	-----------	-----------	--------	----------	----------

11-0000	Management occupations	58,509	63,455	4,946	8%	\$25.23
13-0000	Business and financial operations occupations	32,546	34,421	1,875	6%	\$19.52
15-0000	Computer and mathematical science occupations	12,745	13,720	975	8%	\$24.07
17-0000	Architecture and engineering occupations	11,886	11,771	-115	-1%	\$26.58
19-0000	Life, physical, and social science occupations	7,342	7,336	-6	0%	\$21.84
21-0000	Community and social services occupations	7,976	8,891	916	11%	\$14.08
23-0000	Legal occupations	7,481	7,097	-384	-5%	\$27.47
25-0000	Education, training, and library occupations	35,724	38,923	3,198	9%	\$14.59
27-0000	Arts, design, entertainment, sports, and media occupations	13,682	13,900	218	2%	\$12.99
29-0000	Healthcare practitioners and technical occupations	37,481	42,682	5,201	14%	\$24.39
31-0000	Healthcare support occupations	16,001	18,944	2,943	18%	\$9.60
33-0000	Protective service occupations	12,627	13,290	663	5%	\$13.34
35-0000	Food preparation and serving related occupations	52,145	57,308	5,164	10%	\$6.98
37-0000	Building and grounds cleaning and maintenance occupations	28,457	32,744	4,287	15%	\$7.72
39-0000	Personal care and service occupations	24,800	28,827	4,027	16%	\$7.06
41-0000	Sales and related occupations	83,422	88,031	4,609	6%	\$10.93
43-0000	Office and administrative support occupations	117,553	121,630	4,077	3%	\$11.79
45-0000	Farming, fishing, and forestry occupations	3,612	3,634	22	1%	\$8.08
47-0000	Construction and extraction occupations	41,736	42,950	1,214	3%	\$13.86
49-0000	Installation, maintenance, and repair occupations	31,304	32,717	1,413	5%	\$15.67
51-0000	Production occupations	39,025	40,320	1,294	3%	\$12.59
53-0000	Transportation and material moving occupations	46,981	47,620	639	1%	\$11.67
55-0000	Military Occupations	12,289	11,465	-824	-7%	\$25.63

Source: Economic Modeling Specialists, Inc. - 5/07

## Demographic Overview

### 2006 Population by Race/Ethnicity

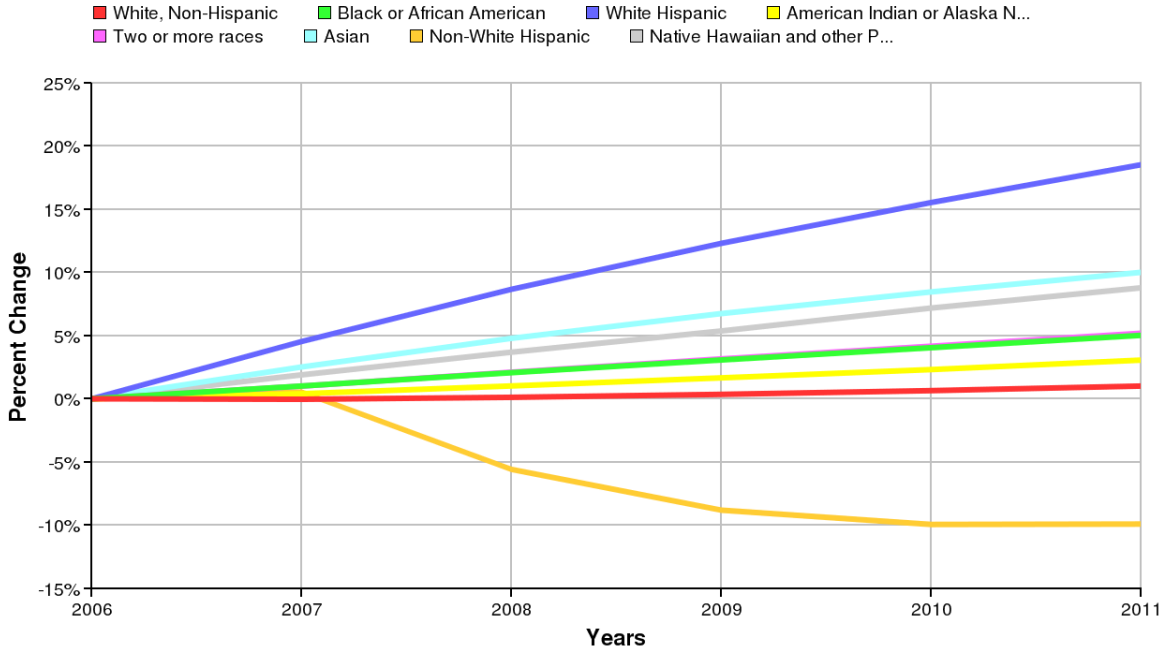


Source: Economic Modeling Specialists, 2007

Ethnicity	2006 Population	% of Region
White, Non-Hispanic	808,919	70.7%
Black or African American	121,094	10.58%
White Hispanic	92,680	8.1%
American Indian or Alaska Native	43,283	3.78%
Two or more races	39,671	3.47%
Asian	31,590	2.76%
Non-White Hispanic	6,098	0.53%
Native Hawaiian and other Pacific Islander	882	0.08%

Source: Economic Modeling Specialists, Inc. - 5/07

## 2006-2011 Percent Population Change by Race/Ethnicity

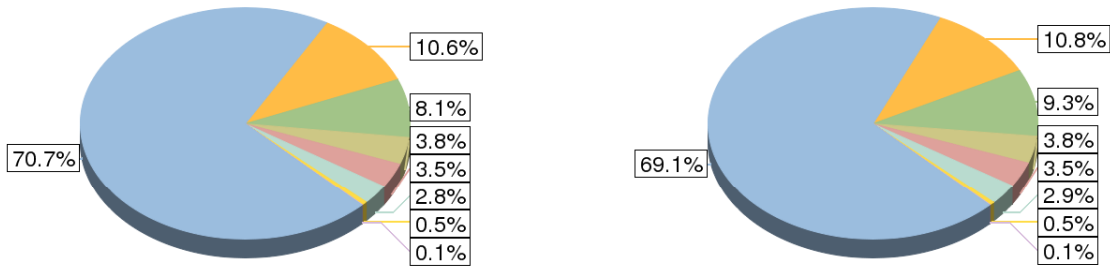


Source: Economic Modeling Specialists, 2007

## Population Change by Race/Ethnicity

2006

2011



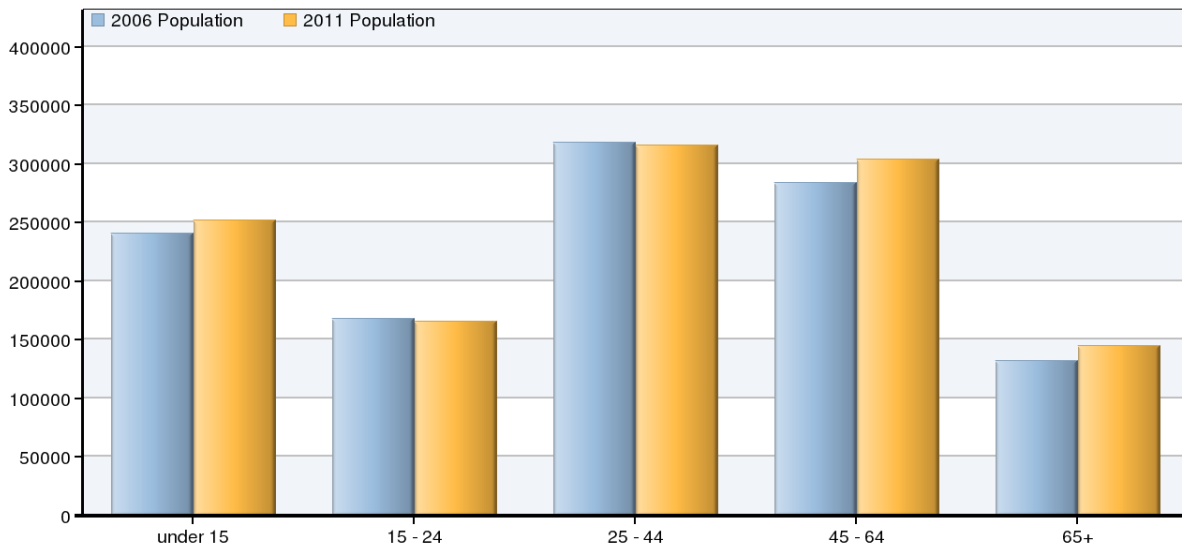
Source: Economic Modeling Specialists, 2007

Race/Ethnicity	2006 Population	2011 Population	Change	% Change
White, Non-Hispanic	808,919	817,061	8,142	1%
Black or African American	121,094	127,170	6,076	5%
White Hispanic	92,680	109,843	17,163	19%

American Indian or Alaska Native	43,283	44,607	1,324	3%
Two or more races	39,671	41,727	2,057	5%
Asian	31,590	34,750	3,160	10%
Non-White Hispanic	6,098	5,493	-605	-10%
Native Hawaiian and other Pacific Islander	882	960	77	9%

Source: Economic Modeling Specialists, Inc. - 5/07

## 2006-2011 Population Change by Age



Source: Economic Modeling Specialists, 2007

Age	2006 Population	2011 Population	Change	% Change
under 15	241,011	251,744	10,733	4%
15 - 24	168,293	165,432	-2,862	-2%
25 - 44	318,644	315,689	-2,955	-1%
45 - 64	284,195	303,881	19,686	7%
65+	132,073	144,865	12,792	10%

Source: Economic Modeling Specialists, Inc. - 5/07