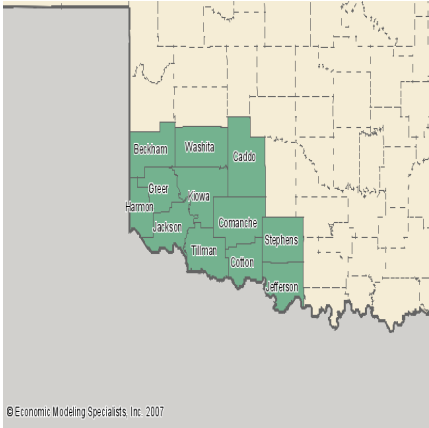


Southwestern Oklahoma State University

Center for Economic & Business Development

Economy Overview

Region: SWOK

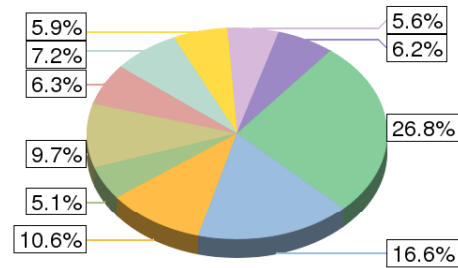
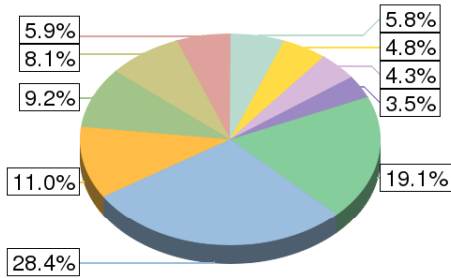


Industry Overview

2006 Industry Supersectors

2006 Regional Jobs

2006 State Jobs



■ Government	■ Retail trade
■ Agriculture, forestry, fishing and hunting	■ Health care and social assistance
■ Accommodation and food services	■ Manufacturing
■ Construction	■ Other services, except public administration
■ Administrative and waste services	■ Other

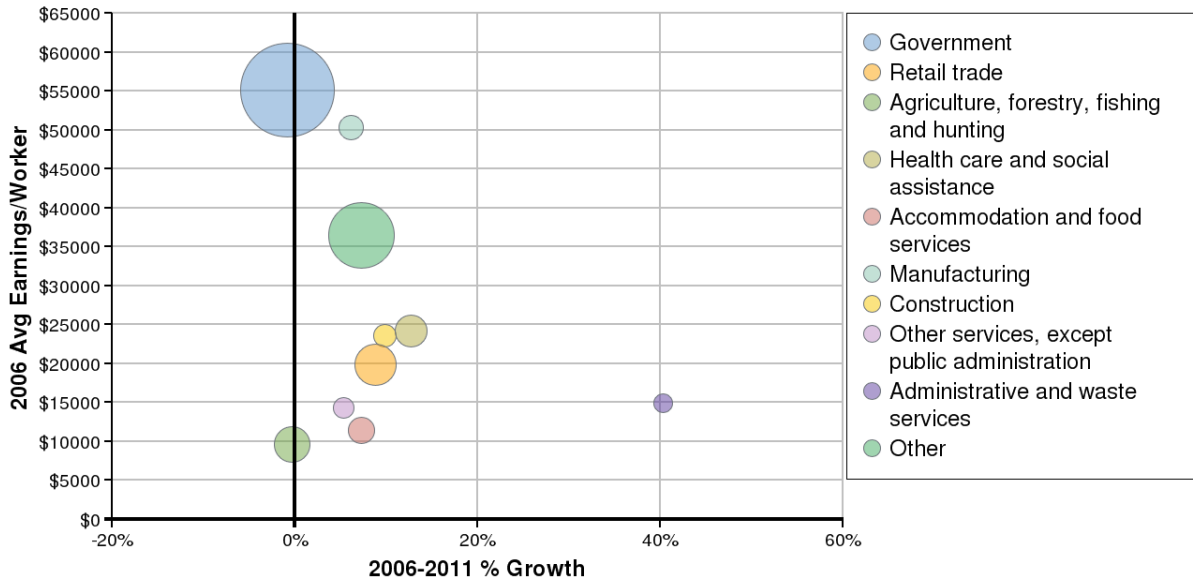
Source: Economic Modeling Specialists, 2007

Description	2006 Regional Jobs	% Regional Jobs	2006 State Jobs	% State Jobs
Agriculture, forestry, fishing and hunting	13,456	9.2%	105,290	5.1%
Mining	4,146	2.8%	61,693	3%
Utilities	856	0.6%	9,822	0.5%
Construction	7,064	4.8%	120,727	5.9%
Manufacturing	8,445	5.8%	148,913	7.2%
Wholesale trade	2,628	1.8%	61,983	3%
Retail trade	15,991	11%	218,161	10.6%
Transportation and warehousing	4,524	3.1%	68,443	3.3%
Information	1,337	0.9%	34,394	1.7%
Finance and insurance	4,491	3.1%	76,256	3.7%
Real estate and rental and leasing	3,024	2.1%	66,430	3.2%
Professional and technical services	3,953	2.7%	107,367	5.2%
Management of companies and enterprises	274	0.2%	12,507	0.6%
Administrative and waste services	5,037	3.5%	127,780	6.2%
Educational services	1,474	1%	25,596	1.2%
Health care and social assistance	11,753	8.1%	200,769	9.7%
Arts, entertainment, and recreation	1,091	0.7%	27,476	1.3%

Accommodation and food services	8,596	5.9%	129,950	6.3%
Other services, except public administration	6,201	4.3%	115,515	5.6%
Government	41,445	28.4%	342,610	16.6%

Source: Economic Modeling Specialists, Inc. - 6/07

2006-2011 Industry Supersectors



*Bubble size represents 2006 jobs in each supersector.

Source: Economic Modeling Specialists, 2007

Description	2006 Jobs	2011 Jobs	Growth	% Growth	2006 EPW
Agriculture, forestry, fishing and hunting	13,456	13,419	-37	0%	\$9,598
Mining	4,146	4,222	76	2%	\$58,839
Utilities	856	831	-25	-3%	\$95,066
Construction	7,064	7,758	693	10%	\$25,902
Manufacturing	8,445	8,961	516	6%	\$53,415
Wholesale trade	2,628	2,682	54	2%	\$28,590
Retail trade	15,991	17,408	1,417	9%	\$21,639
Transportation and warehousing	4,524	4,741	217	5%	\$40,487
Information	1,337	1,242	-95	-7%	\$32,867
Finance and insurance	4,491	5,259	768	17%	\$35,219
Real estate and rental and leasing	3,024	3,512	488	16%	\$23,446
Professional and technical services	3,953	3,883	-70	-2%	\$37,154
Management of companies and enterprises	274	378	104	38%	\$44,256
Administrative and waste services	5,037	7,069	2,031	40%	\$20,937
Educational services	1,474	1,784	309	21%	\$37,507
Health care and social assistance	11,753	13,248	1,495	13%	\$27,273
Arts, entertainment, and recreation	1,091	1,290	200	18%	\$15,102

Accommodation and food services	8,596	9,218	623	7%	\$12,313
Other services, except public administration	6,201	6,529	328	5%	\$15,058
Government	41,445	41,087	-358	-1%	\$54,669

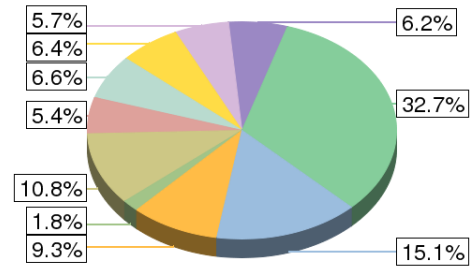
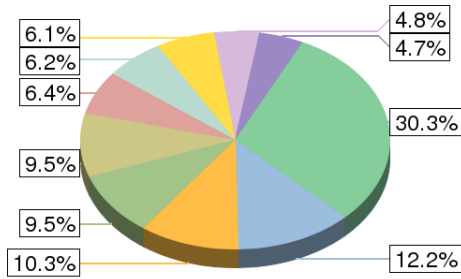
Source: Economic Modeling Specialists, Inc. - 6/07

Occupation Overview

2006 Occupational Supersectors

2006 Regional Jobs

2006 State Jobs



Office and administrative support occupations	Management occupations
Military Occupations	Sales and related occupations
Education, training, and library occupations	Food preparation and serving related occupations
Transportation and material moving occupations	Construction and extraction occupations
Production occupations	Other

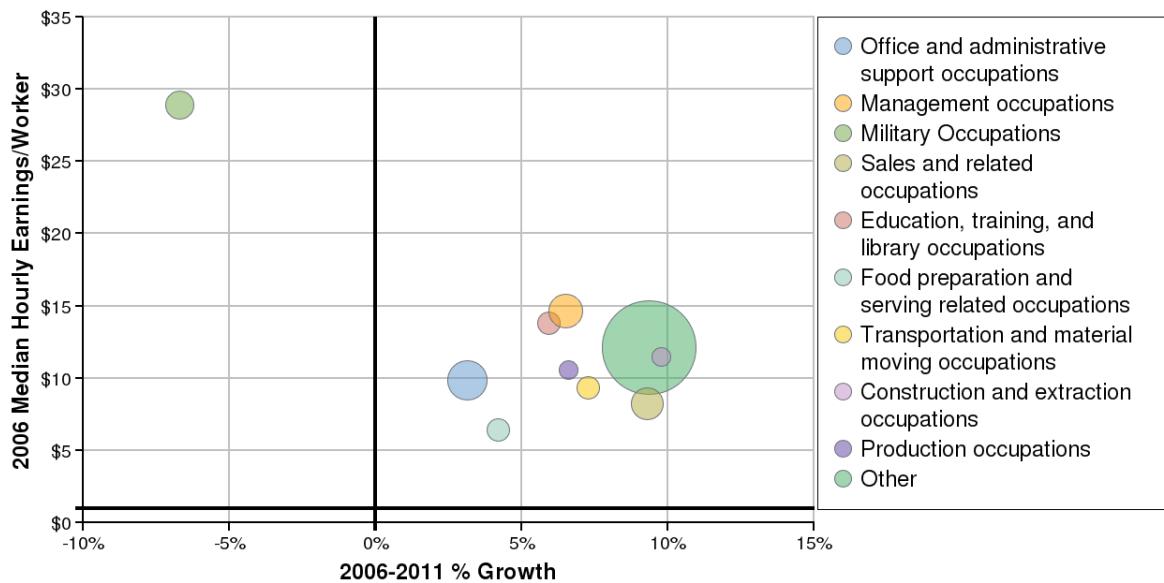
Source: Economic Modeling Specialists, 2007

SOC Code	Description	2006 Regional Jobs	% Regional Jobs	2006 State Jobs	% State Jobs
11-0000	Management occupations	15,065	10.3%	191,943	9.3%
13-0000	Business and financial operations occupations	4,433	3%	79,718	3.9%
15-0000	Computer and mathematical science occupations	1,194	0.8%	29,960	1.5%
17-0000	Architecture and engineering occupations	1,325	0.9%	29,362	1.4%
19-0000	Life, physical, and social science occupations	1,129	0.8%	18,952	0.9%
21-0000	Community and social services occupations	1,853	1.3%	26,091	1.3%
23-0000	Legal occupations	778	0.5%	16,930	0.8%
25-0000	Education, training, and library occupations	9,373	6.4%	111,034	5.4%

27-0000	Arts, design, entertainment, sports, and media occupations	1,734	1.2%	34,849	1.7%
29-0000	Healthcare practitioners and technical occupations	6,497	4.5%	96,991	4.7%
31-0000	Healthcare support occupations	3,448	2.4%	51,325	2.5%
33-0000	Protective service occupations	2,973	2%	35,095	1.7%
35-0000	Food preparation and serving related occupations	9,051	6.2%	136,315	6.6%
37-0000	Building and grounds cleaning and maintenance occupations	5,622	3.9%	76,493	3.7%
39-0000	Personal care and service occupations	4,671	3.2%	67,737	3.3%
41-0000	Sales and related occupations	13,779	9.5%	222,897	10.8%
43-0000	Office and administrative support occupations	17,775	12.2%	311,432	15.1%
45-0000	Farming, fishing, and forestry occupations	2,780	1.9%	23,847	1.2%
47-0000	Construction and extraction occupations	6,938	4.8%	117,350	5.7%
49-0000	Installation, maintenance, and repair occupations	5,742	3.9%	87,454	4.2%
51-0000	Production occupations	6,789	4.7%	126,808	6.2%
53-0000	Transportation and material moving occupations	8,955	6.1%	132,323	6.4%
55-0000	Military Occupations	13,848	9.5%	36,437	1.8%

Source: Economic Modeling Specialists, Inc. - 6/07

2006-2011 Occupational Supersectors



*Bubble size represents 2006 jobs in each supersector.

Source: Economic Modeling Specialists, 2007

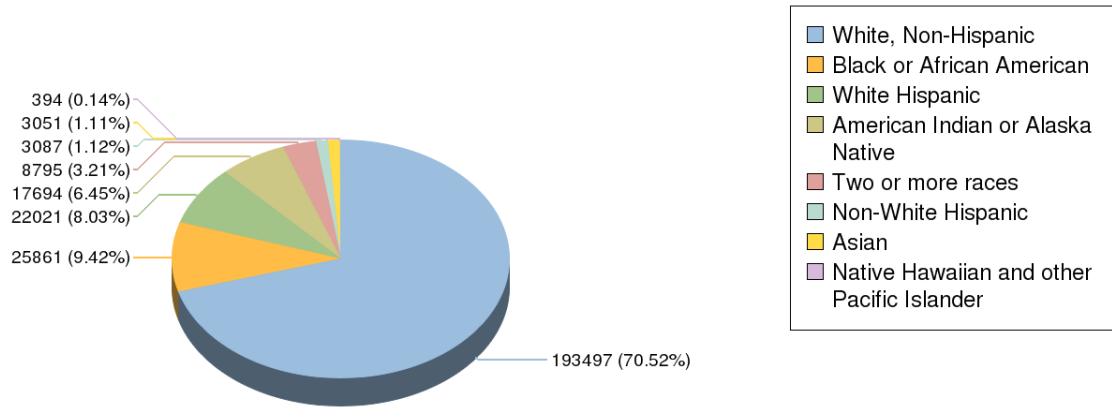
SOC Code	Description	2006 Jobs	2011 Jobs	Growth	% Growth	2006 EPW
----------	-------------	-----------	-----------	--------	----------	----------

11-0000	Management occupations	15,065	16,046	981	7%	\$15.58
13-0000	Business and financial operations occupations	4,433	4,867	434	10%	\$16.40
15-0000	Computer and mathematical science occupations	1,194	1,357	164	14%	\$20.32
17-0000	Architecture and engineering occupations	1,325	1,428	103	8%	\$23.75
19-0000	Life, physical, and social science occupations	1,129	1,199	70	6%	\$19.26
21-0000	Community and social services occupations	1,853	2,056	203	11%	\$12.28
23-0000	Legal occupations	778	730	-49	-6%	\$20.19
25-0000	Education, training, and library occupations	9,373	9,928	555	6%	\$14.59
27-0000	Arts, design, entertainment, sports, and media occupations	1,734	1,758	24	1%	\$10.82
29-0000	Healthcare practitioners and technical occupations	6,497	7,075	578	9%	\$22.71
31-0000	Healthcare support occupations	3,448	3,782	334	10%	\$8.40
33-0000	Protective service occupations	2,973	3,395	422	14%	\$11.57
35-0000	Food preparation and serving related occupations	9,051	9,430	379	4%	\$6.71
37-0000	Building and grounds cleaning and maintenance occupations	5,622	6,589	966	17%	\$7.24
39-0000	Personal care and service occupations	4,671	5,241	570	12%	\$6.18
41-0000	Sales and related occupations	13,779	15,059	1,279	9%	\$9.03
43-0000	Office and administrative support occupations	17,775	18,335	560	3%	\$10.19
45-0000	Farming, fishing, and forestry occupations	2,780	2,793	13	0%	\$6.23
47-0000	Construction and extraction occupations	6,938	7,617	679	10%	\$12.61
49-0000	Installation, maintenance, and repair occupations	5,742	6,045	302	5%	\$13.81
51-0000	Production occupations	6,789	7,238	448	7%	\$11.25
53-0000	Transportation and material moving occupations	8,955	9,606	651	7%	\$10.02
55-0000	Military Occupations	13,848	12,919	-929	-7%	\$26.99

Source: Economic Modeling Specialists, Inc. - 6/07

Demographic Overview

2006 Population by Race/Ethnicity

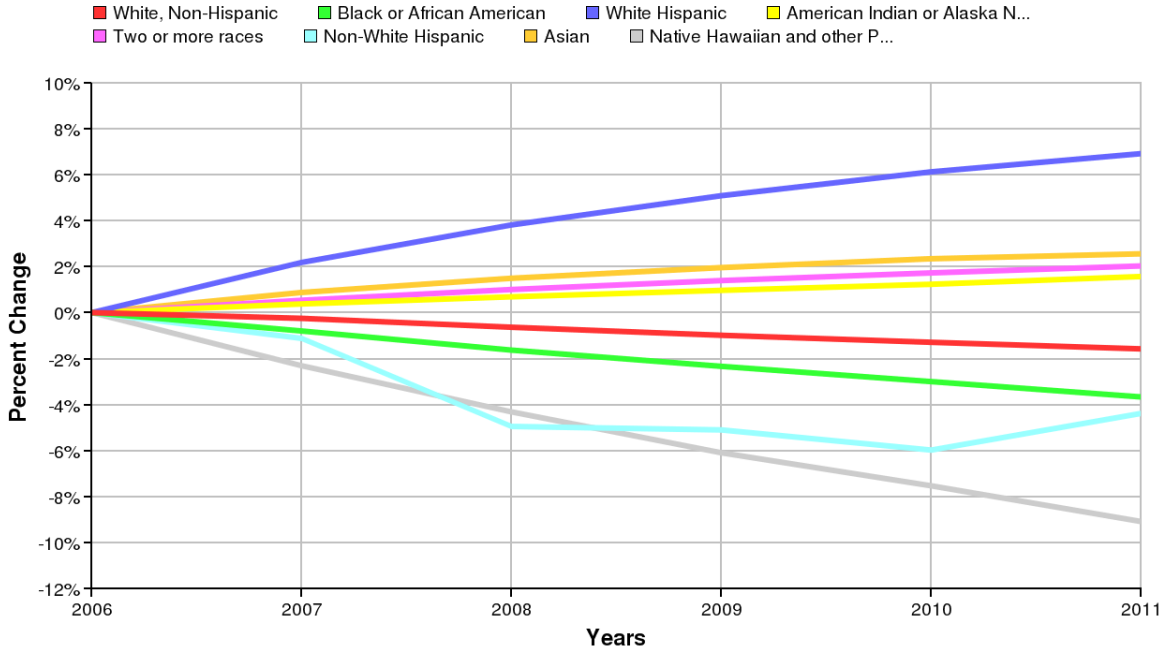


Source: Economic Modeling Specialists, 2007

Ethnicity	2006 Population	% of Region
White, Non-Hispanic	193,497	70.52%
Black or African American	25,861	9.42%
White Hispanic	22,021	8.03%
American Indian or Alaska Native	17,694	6.45%
Two or more races	8,795	3.21%
Non-White Hispanic	3,087	1.12%
Asian	3,051	1.11%
Native Hawaiian and other Pacific Islander	394	0.14%

Source: Economic Modeling Specialists, Inc. - 6/07

2006-2011 Percent Population Change by Race/Ethnicity

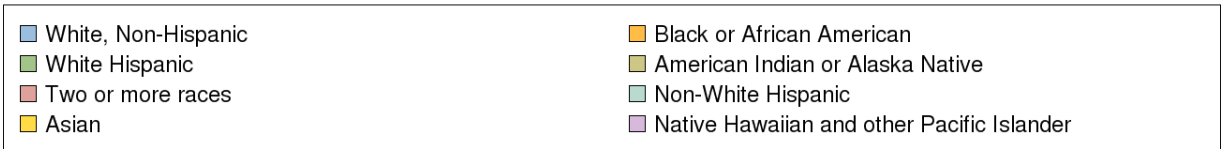
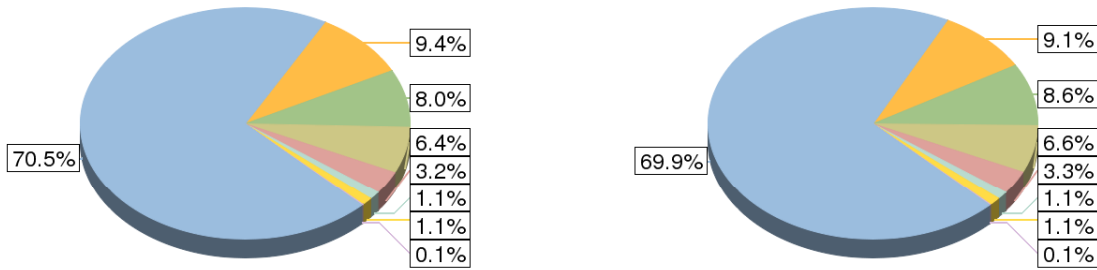


Source: Economic Modeling Specialists, 2007

Population Change by Race/Ethnicity

2006

2011



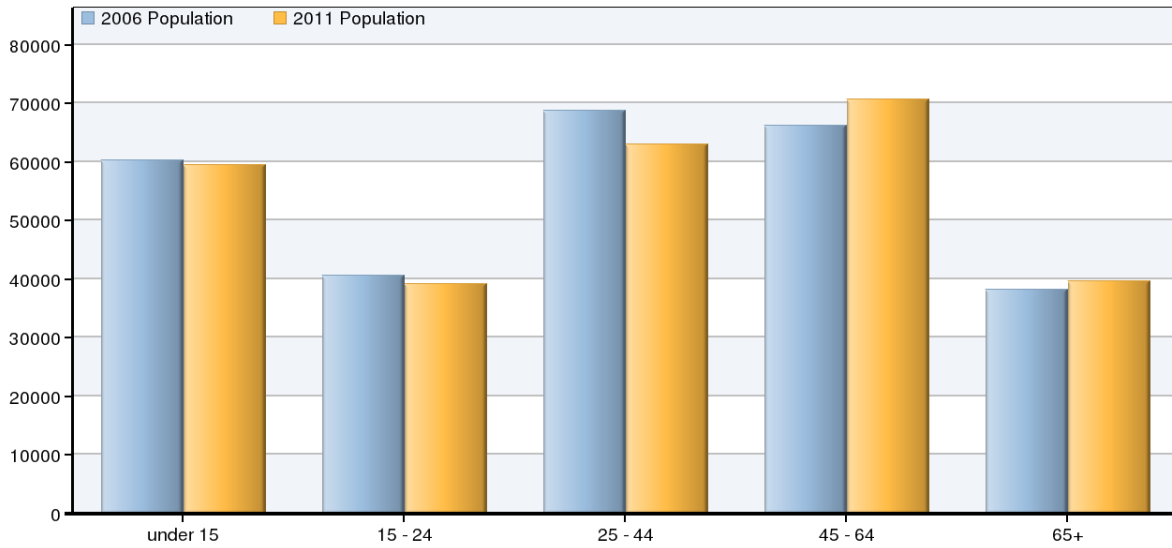
Source: Economic Modeling Specialists, 2007

Race/Ethnicity	2006 Population	2011 Population	Change	% Change
White, Non-Hispanic	193,497	190,442	-3,055	-2%
Black or African American	25,861	24,912	-949	-4%
White Hispanic	22,021	23,544	1,523	7%

American Indian or Alaska Native	17,694	17,972	278	2%
Two or more races	8,795	8,973	179	2%
Non-White Hispanic	3,087	2,952	-135	-4%
Asian	3,051	3,129	78	3%
Native Hawaiian and other Pacific Islander	394	359	-36	-9%

Source: Economic Modeling Specialists, Inc. - 6/07

2006-2011 Population Change by Age



Source: Economic Modeling Specialists, 2007

Age	2006 Population	2011 Population	Change	% Change
under 15	60,383	59,554	-829	-1%
15 - 24	40,605	39,206	-1,400	-3%
25 - 44	68,830	63,117	-5,713	-8%
45 - 64	66,317	70,661	4,344	7%
65+	38,266	39,746	1,480	4%

Source: Economic Modeling Specialists, Inc. - 6/07