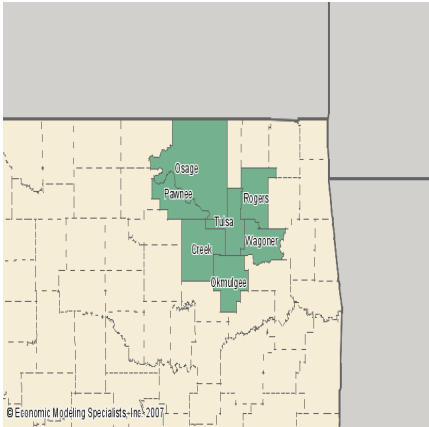


# Southwestern Oklahoma State University

## Center for Economic & Business Development

### Economy Overview

### Region: TULSA MSA

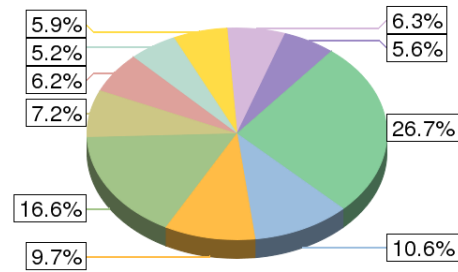
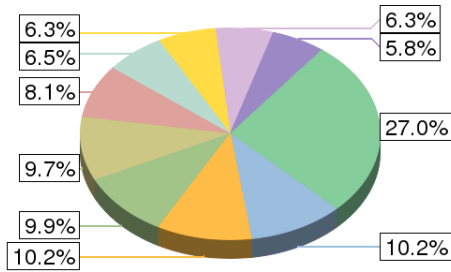


# Industry Overview

## 2006 Industry Supersectors

2006 Regional Jobs

2006 State Jobs



<span style="color: blue;">■</span> Retail trade	<span style="color: orange;">■</span> Health care and social assistance
<span style="color: green;">■</span> Government	<span style="color: lightgreen;">■</span> Manufacturing
<span style="color: brown;">■</span> Administrative and waste services	<span style="color: lightblue;">■</span> Professional and technical services
<span style="color: yellow;">■</span> Construction	<span style="color: purple;">■</span> Accommodation and food services
<span style="color: purple;">■</span> Other services, except public administration	<span style="color: green;">■</span> Other

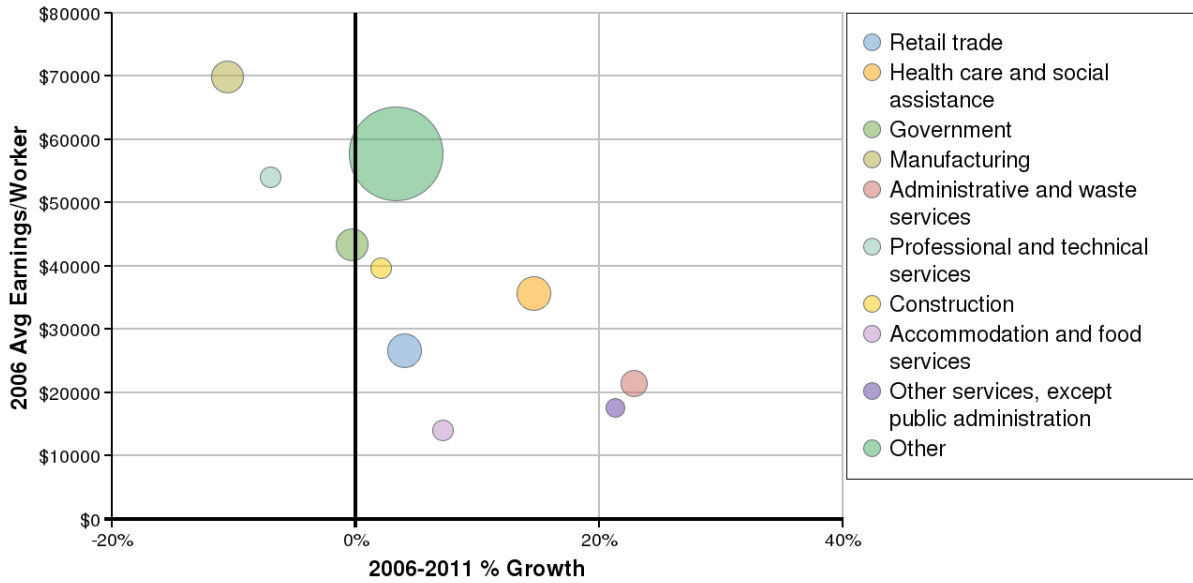
Source: Economic Modeling Specialists, 2007

Description	2006 Regional Jobs	% Regional Jobs	2006 State Jobs	% State Jobs
Agriculture, forestry, fishing and hunting	10,225	1.862%	105,290	5.107%
Mining	12,300	2.239%	61,693	2.992%
Utilities	2,856	0.52%	9,822	0.476%
Construction	34,488	6.279%	120,727	5.856%
Manufacturing	53,507	9.741%	148,913	7.223%
Wholesale trade	19,889	3.621%	61,983	3.006%
Retail trade	56,277	10.246%	218,161	10.582%
Transportation and warehousing	22,684	4.13%	68,443	3.32%
Information	12,989	2.365%	34,394	1.668%
Finance and insurance	23,994	4.368%	76,256	3.699%
Real estate and rental and leasing	21,078	3.837%	66,430	3.222%
Professional and technical services	35,587	6.479%	107,367	5.208%
Management of companies and enterprises	5,821	1.06%	12,507	0.607%
Administrative and waste services	44,498	8.101%	127,780	6.198%
Educational services	9,368	1.706%	25,596	1.242%
Health care and social assistance	55,934	10.183%	200,769	9.738%
Arts, entertainment, and recreation	7,350	1.338%	27,476	1.333%

Accommodation and food services	34,429	6.268%	129,950	6.303%
Other services, except public administration	31,843	5.797%	115,515	5.603%
Government	54,156	9.86%	342,610	16.618%

Source: Economic Modeling Specialists, Inc. - 5/07

## 2006-2011 Industry Supersectors



\*Bubble size represents 2006 jobs in each supersector.

Source: Economic Modeling Specialists, 2007

Description	2006 Jobs	2011 Jobs	Growth	% Growth	2006 EPW
Agriculture, forestry, fishing and hunting	10,225	10,357	132	1%	\$7,496
Mining	12,300	8,894	-3,406	-28%	\$167,075
Utilities	2,856	3,052	196	7%	\$148,189
Construction	34,488	35,191	704	2%	\$40,587
Manufacturing	53,507	47,849	-5,657	-11%	\$62,558
Wholesale trade	19,889	18,443	-1,446	-7%	\$66,408
Retail trade	56,277	58,512	2,235	4%	\$27,801
Transportation and warehousing	22,684	21,848	-835	-4%	\$59,716
Information	12,989	14,517	1,528	12%	\$62,373
Finance and insurance	23,994	26,684	2,690	11%	\$55,288
Real estate and rental and leasing	21,078	24,499	3,422	16%	\$36,342
Professional and technical services	35,587	33,085	-2,502	-7%	\$50,317
Management of companies and enterprises	5,821	6,526	705	12%	\$66,235
Administrative and waste services	44,498	54,670	10,172	23%	\$26,473
Educational services	9,368	10,640	1,271	14%	\$23,593
Health care and social assistance	55,934	64,087	8,154	15%	\$40,931
Arts, entertainment, and recreation	7,350	7,979	629	9%	\$17,757

Accommodation and food services	34,429	36,889	2,460	7%	\$15,009
Other services, except public administration	31,843	38,637	6,795	21%	\$21,411
Government	54,156	53,974	-182	0%	\$43,302

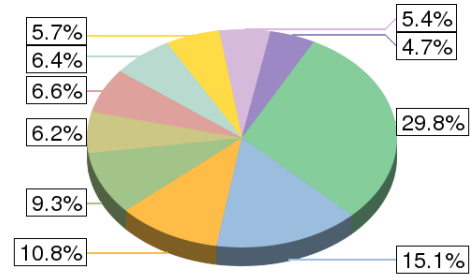
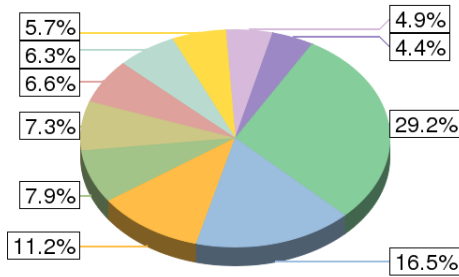
Source: Economic Modeling Specialists, Inc. - 5/07

## Occupation Overview

### 2006 Occupational Supersectors

2006 Regional Jobs

2006 State Jobs



Office and administrative support occupations	Sales and related occupations
Management occupations	Production occupations
Food preparation and serving related occupations	Transportation and material moving occupations
Construction and extraction occupations	Education, training, and library occupations
Healthcare practitioners and technical occupations	Other

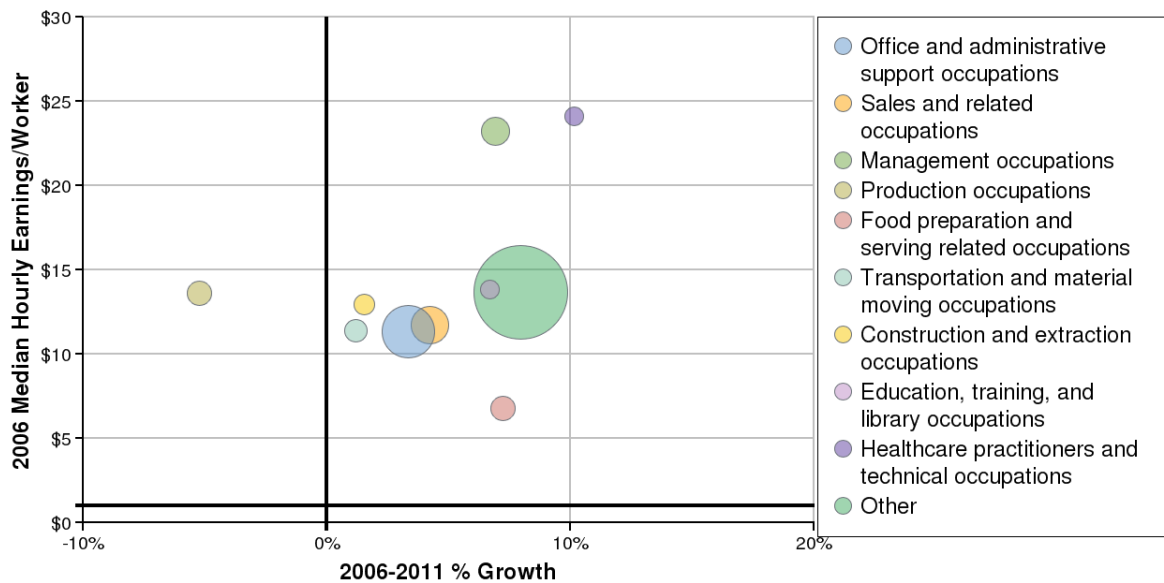
Source: Economic Modeling Specialists, 2007

SOC Code	Description	2006 Regional Jobs	% Regional Jobs	2006 State Jobs	% State Jobs
11-0000	Management occupations	43,539	7.927%	191,943	9.312%
13-0000	Business and financial operations occupations	23,614	4.299%	79,718	3.867%
15-0000	Computer and mathematical science occupations	10,351	1.884%	29,960	1.453%
17-0000	Architecture and engineering occupations	9,975	1.816%	29,362	1.424%
19-0000	Life, physical, and social science occupations	4,953	0.902%	18,952	0.919%
21-0000	Community and social services occupations	6,161	1.122%	26,091	1.266%
23-0000	Legal occupations	4,806	0.875%	16,930	0.821%
25-0000	Education, training, and library occupations	27,015	4.918%	111,034	5.386%

27-0000	Arts, design, entertainment, sports, and media occupations	10,700	1.948%	34,849	1.691%
29-0000	Healthcare practitioners and technical occupations	24,066	4.381%	96,991	4.705%
31-0000	Healthcare support occupations	15,541	2.829%	51,325	2.49%
33-0000	Protective service occupations	8,997	1.638%	35,095	1.703%
35-0000	Food preparation and serving related occupations	36,186	6.588%	136,315	6.613%
37-0000	Building and grounds cleaning and maintenance occupations	18,259	3.324%	76,493	3.711%
39-0000	Personal care and service occupations	16,546	3.012%	67,737	3.286%
41-0000	Sales and related occupations	61,440	11.186%	222,897	10.813%
43-0000	Office and administrative support occupations	90,853	16.541%	311,432	15.108%
45-0000	Farming, fishing, and forestry occupations	2,902	0.528%	23,847	1.157%
47-0000	Construction and extraction occupations	31,054	5.654%	117,350	5.693%
49-0000	Installation, maintenance, and repair occupations	23,757	4.325%	87,454	4.243%
51-0000	Production occupations	40,174	7.314%	126,808	6.152%
53-0000	Transportation and material moving occupations	34,526	6.286%	132,323	6.419%
55-0000	Military Occupations	3,858	0.702%	36,437	1.768%

Source: Economic Modeling Specialists, Inc. - 5/07

## 2006-2011 Occupational Supersectors



\*Bubble size represents 2006 jobs in each supersector.

Source: Economic Modeling Specialists, 2007

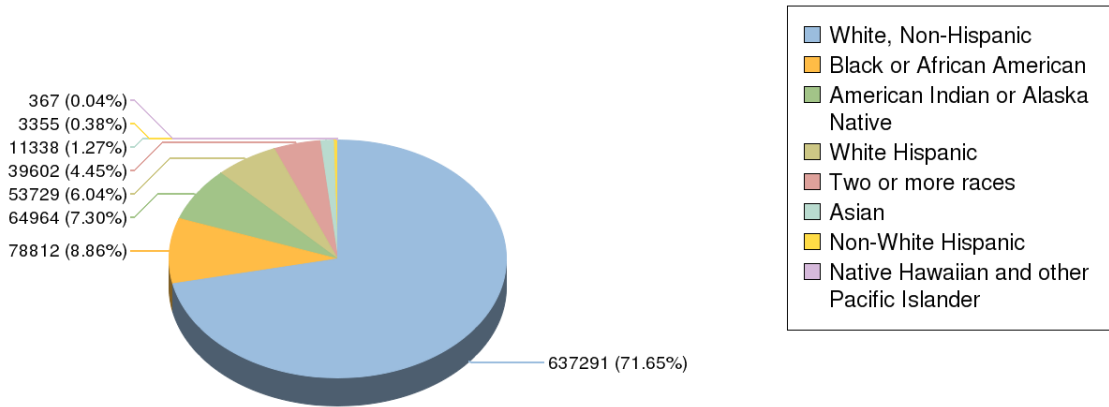
SOC Code	Description	2006 Jobs	2011 Jobs	Growth	% Growth	2006 EPW
----------	-------------	-----------	-----------	--------	----------	----------

11-0000	Management occupations	43,539	46,555	3,017	7%	\$24.82
13-0000	Business and financial operations occupations	23,614	25,576	1,962	8%	\$18.62
15-0000	Computer and mathematical science occupations	10,351	11,213	861	8%	\$22.60
17-0000	Architecture and engineering occupations	9,975	8,979	-995	-10%	\$24.72
19-0000	Life, physical, and social science occupations	4,953	4,807	-146	-3%	\$21.27
21-0000	Community and social services occupations	6,161	7,161	1,000	16%	\$13.67
23-0000	Legal occupations	4,806	4,569	-237	-5%	\$26.79
25-0000	Education, training, and library occupations	27,015	28,825	1,810	7%	\$14.78
27-0000	Arts, design, entertainment, sports, and media occupations	10,700	11,237	537	5%	\$12.96
29-0000	Healthcare practitioners and technical occupations	24,066	26,509	2,443	10%	\$26.56
31-0000	Healthcare support occupations	15,541	18,686	3,145	20%	\$9.87
33-0000	Protective service occupations	8,997	9,972	975	11%	\$13.04
35-0000	Food preparation and serving related occupations	36,186	38,803	2,618	7%	\$7.26
37-0000	Building and grounds cleaning and maintenance occupations	18,259	20,466	2,207	12%	\$7.50
39-0000	Personal care and service occupations	16,546	19,576	3,030	18%	\$7.01
41-0000	Sales and related occupations	61,440	64,033	2,593	4%	\$12.19
43-0000	Office and administrative support occupations	90,853	93,885	3,033	3%	\$11.72
45-0000	Farming, fishing, and forestry occupations	2,902	2,930	28	1%	\$7.70
47-0000	Construction and extraction occupations	31,054	31,533	479	2%	\$13.13
49-0000	Installation, maintenance, and repair occupations	23,757	24,414	657	3%	\$16.33
51-0000	Production occupations	40,174	38,072	-2,101	-5%	\$12.91
53-0000	Transportation and material moving occupations	34,526	34,934	409	1%	\$11.54
55-0000	Military Occupations	3,858	3,599	-259	-7%	\$14.16

Source: Economic Modeling Specialists, Inc. - 5/07

## Demographic Overview

### 2006 Population by Race/Ethnicity

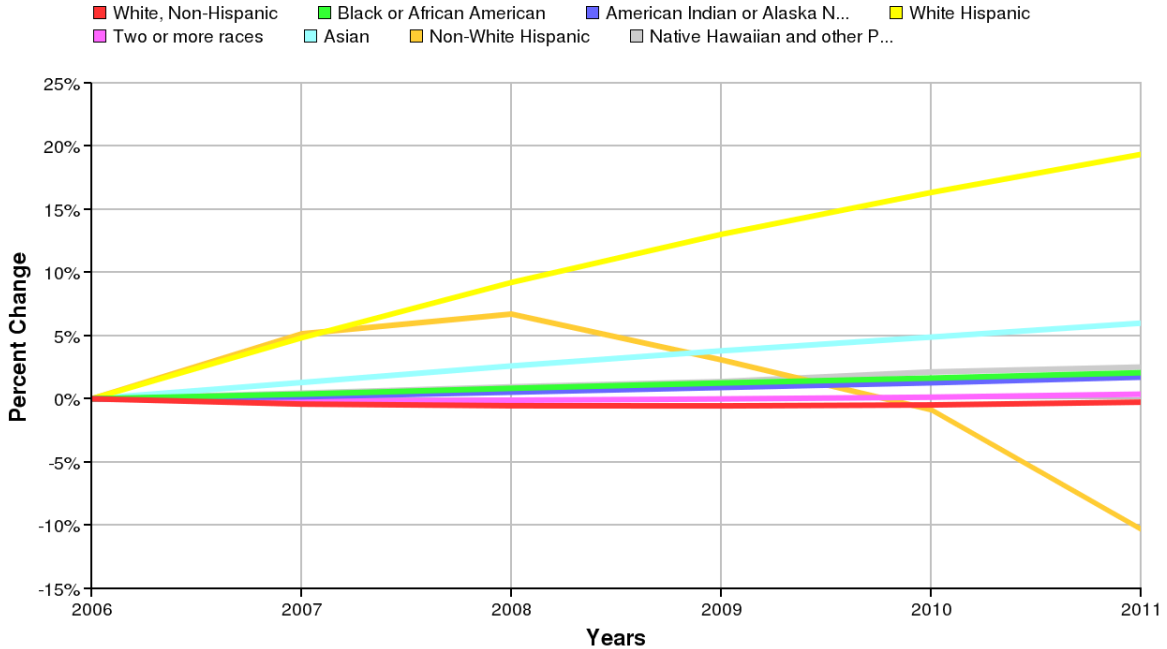


Source: Economic Modeling Specialists, 2007

Ethnicity	2006 Population	% of Region
White, Non-Hispanic	637,291	71.65%
Black or African American	78,812	8.86%
American Indian or Alaska Native	64,964	7.3%
White Hispanic	53,729	6.04%
Two or more races	39,602	4.45%
Asian	11,338	1.27%
Non-White Hispanic	3,355	0.38%
Native Hawaiian and other Pacific Islander	367	0.04%

Source: Economic Modeling Specialists, Inc. - 5/07

## 2006-2011 Percent Population Change by Race/Ethnicity

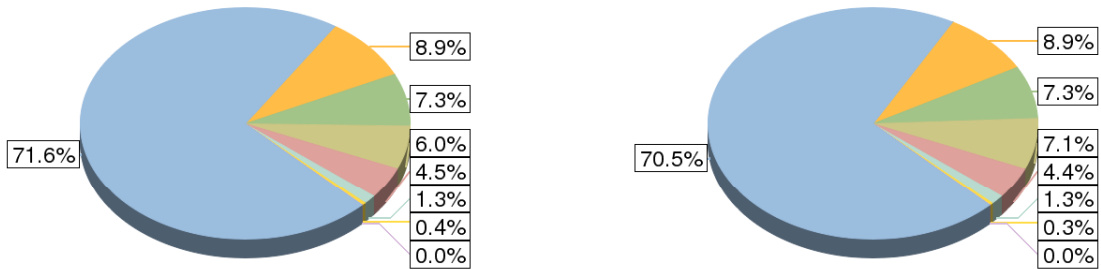


Source: Economic Modeling Specialists, 2007

## Population Change by Race/Ethnicity

2006

2011



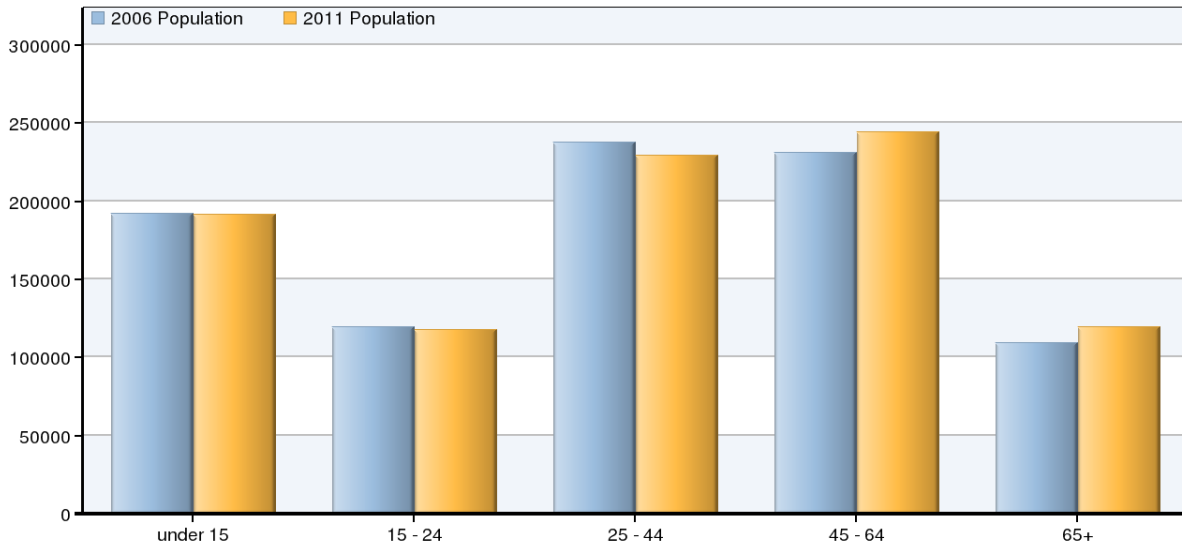
Source: Economic Modeling Specialists, 2007

Race/Ethnicity	2006 Population	2011 Population	Change	% Change
White, Non-Hispanic	637,291	635,583	-1,708	-0%
Black or African American	78,812	80,437	1,624	2%
American Indian or Alaska Native	64,964	66,075	1,111	2%

White Hispanic	53,729	64,120	10,391	19%
Two or more races	39,602	39,746	144	0%
Asian	11,338	12,017	678	6%
Non-White Hispanic	3,355	3,008	-346	-10%
Native Hawaiian and other Pacific Islander	367	377	9	3%

Source: Economic Modeling Specialists, Inc. - 5/07

## 2006-2011 Population Change by Age



Source: Economic Modeling Specialists, 2007

Age	2006 Population	2011 Population	Change	% Change
under 15	191,870	191,505	-366	-0%
15 - 24	119,448	117,349	-2,099	-2%
25 - 44	237,874	229,083	-8,791	-4%
45 - 64	230,821	243,910	13,088	6%
65+	109,445	119,517	10,072	9%

Source: Economic Modeling Specialists, Inc. - 5/07