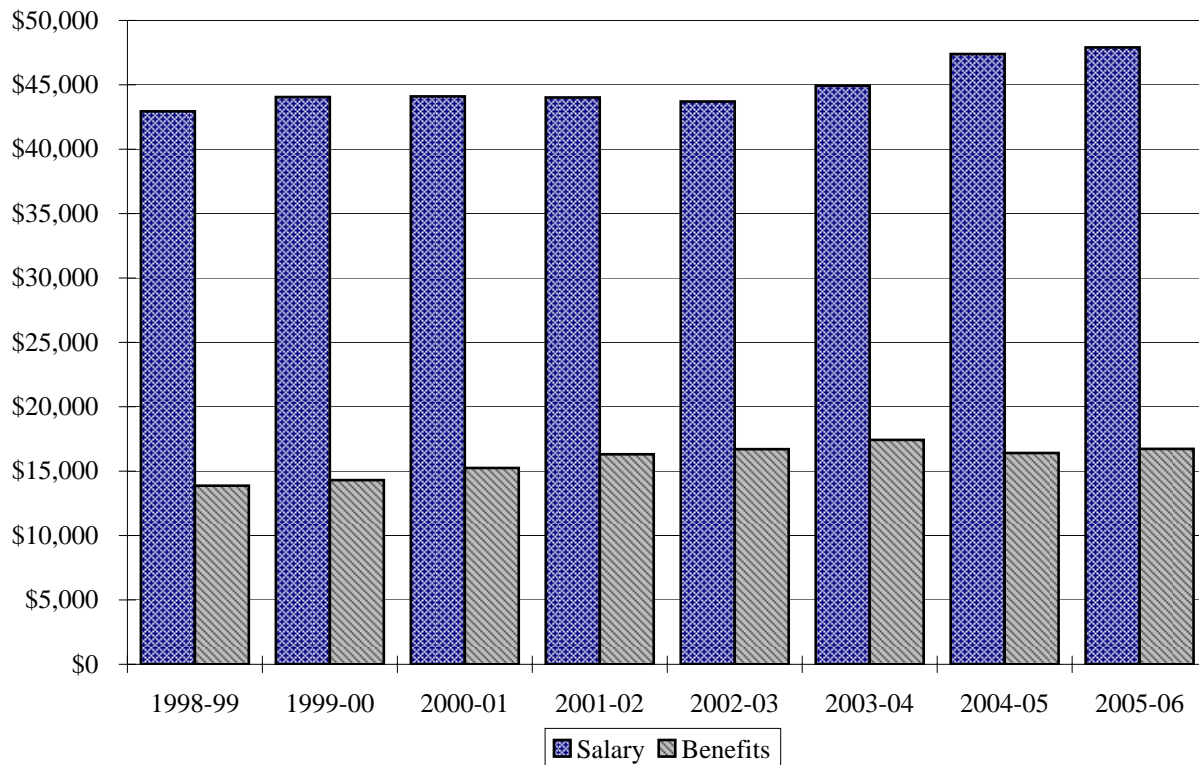


AVERAGE SALARY AND BENEFITS BY RANK FOR 9-MONTH FACULTY

Rank	1998-99		1999-00		2000-01		2001-02		2002-03		2003-04		2004-05		2005-06	
	Salary	Benefits	Salary	Benefits	Salary	Benefits	Salary	Benefits	Salary	Benefits	Salary	Benefits	Salary	Benefits	Salary	Benefits
Professor	\$55,443	\$17,307	\$57,260	\$17,939	\$58,580	\$19,262	\$60,270	\$21,098	\$60,123	\$21,564	\$61,227	\$22,231	\$64,837	\$20,810	\$66,398	\$21,420
Associate Professor	\$48,152	\$15,367	\$49,685	\$15,923	\$50,382	\$17,042	\$50,726	\$18,313	\$50,018	\$18,614	\$51,158	\$19,342	\$54,713	\$18,287	\$55,969	\$18,774
Assistant Professor	\$39,475	\$12,826	\$40,309	\$13,163	\$40,325	\$14,186	\$40,135	\$15,193	\$39,136	\$15,370	\$40,507	\$16,124	\$42,415	\$15,165	\$42,807	\$15,435
Instructor *	\$32,299	\$11,026	\$33,872	\$11,603	\$34,261	\$12,496	\$34,238	\$13,399	\$34,382	\$13,912	\$35,223	\$14,515	\$37,795	\$13,968	\$38,336	\$14,063
Faculty Average	\$42,942	\$13,870	\$44,051	\$14,304	\$44,100	\$15,244	\$44,019	\$16,311	\$43,704	\$16,705	\$44,935	\$17,427	\$47,390	\$16,410	\$47,905	\$16,728
Percentage Change	2.52%	4.07%	2.58%	3.13%	0.11%	6.57%	-0.18%	7.00%	-0.72%	2.42%	2.82%	4.32%	5.46%	-5.84%	1.09%	1.94%



* Instructors include faculty members from the Sayre Campus.