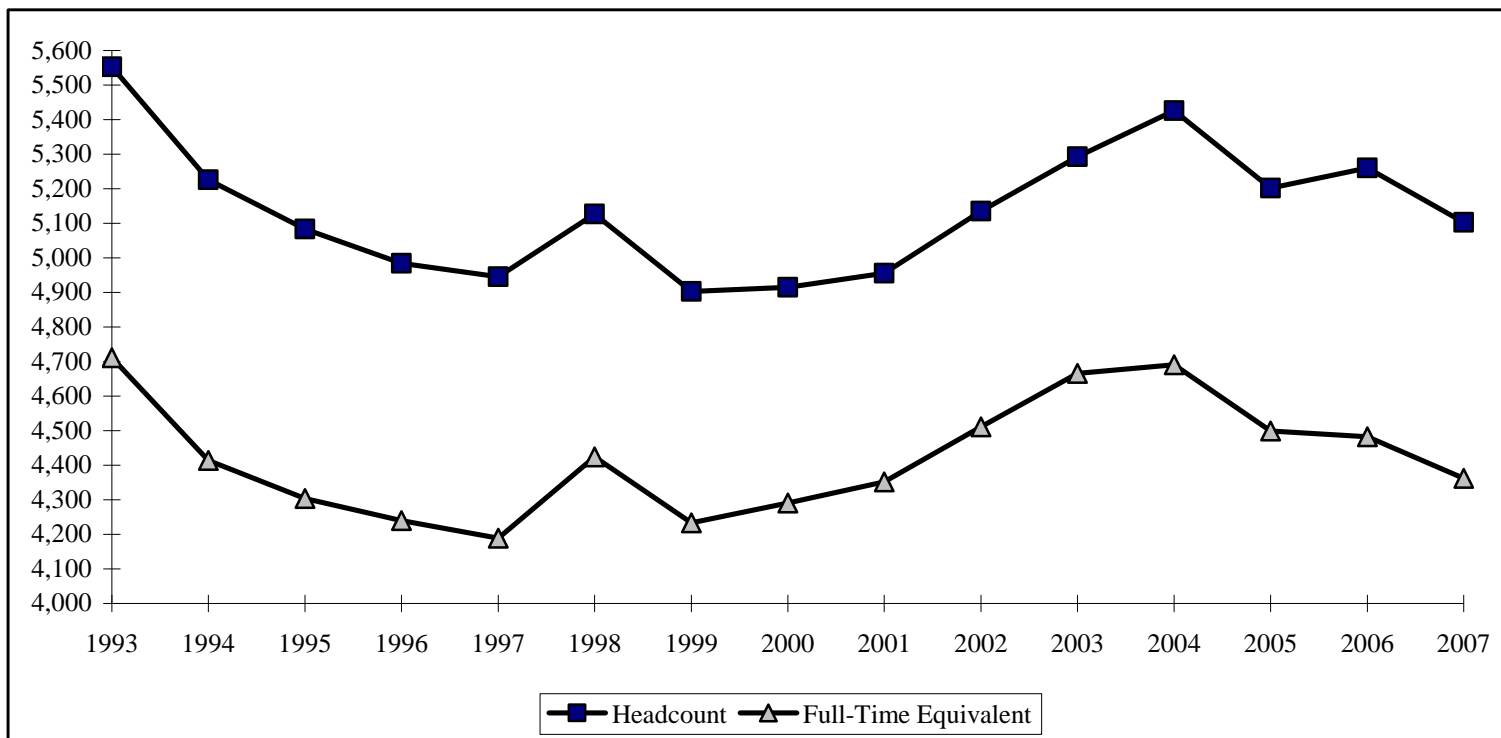


**FALL 1993-FALL 2007 HEADCOUNT AND FULL-TIME EQUIVALENT
SOUTHWESTERN OKLAHOMA STATE UNIVERSITY**

Fall	Headcount	Full-Time Equivalent
1993	5,553	4,711
1994	5,226	4,414
1995	5,083	4,304
1996	4,984	4,240
1997	4,945	4,189
1998	5,127	4,424
1999	4,903	4,233
2000	4,915	4,291
2001	4,956	4,352
2002	5,135	4,511
2003	5,293	4,666
2004	5,426	4,691
2005	5,202	4,499
2006	5,260	4,482
2007	5,103	4,362



Beginning in 1997, headcount includes a duplicate count of students attending classes on both Weatherford and Sayre campuses.