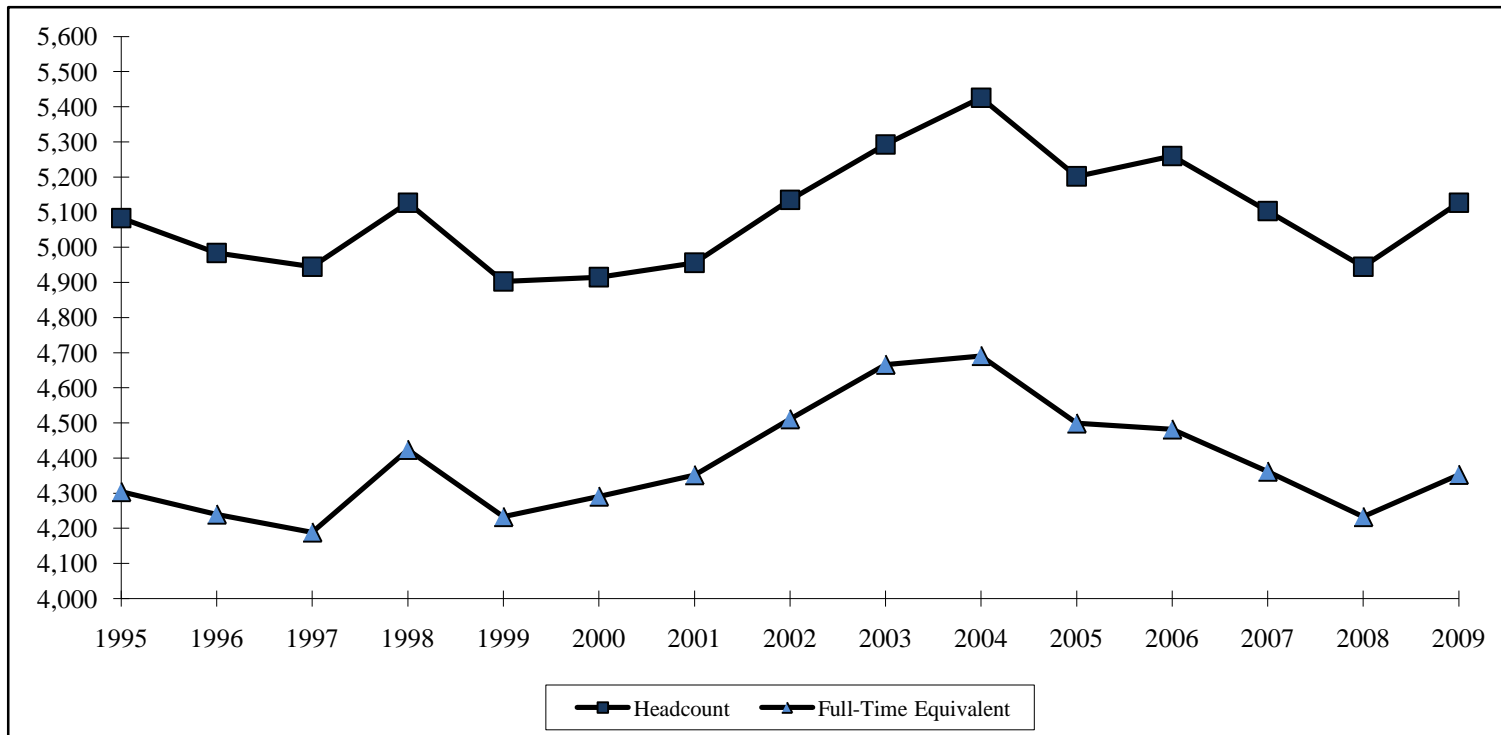


FALL 1995-FALL 2009 HEADCOUNT AND FULL-TIME EQUIVALENT – SWOSU

Fall	Headcount	Full-Time Equivalent
1995	5,083	4,304
1996	4,984	4,240
1997	4,945	4,189
1998	5,127	4,424
1999	4,903	4,233
2000	4,915	4,291
2001	4,956	4,352
2002	5,135	4,511
2003	5,293	4,666
2004	5,426	4,691
2005	5,202	4,499
2006	5,260	4,482
2007	5,103	4,362
2008	4,945	4,233
2009	5,127	4,353



Beginning in 1997, headcount includes a duplicate count of students attending classes on both Weatherford and Sayre campuses.