



By: Leia Moore



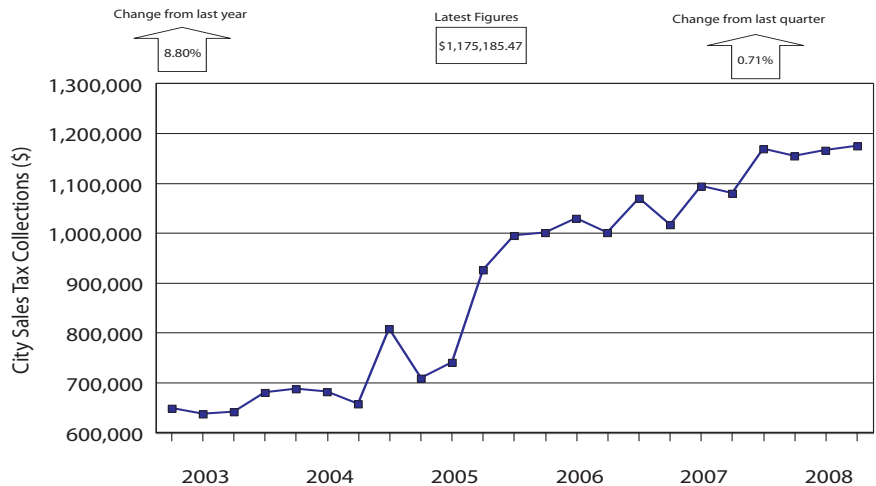
SOIC Regional Economic Indicators:

Weatherford Focus on the Retail Trade Sectors (SIC 52-59)

Center for Economic & Business Development

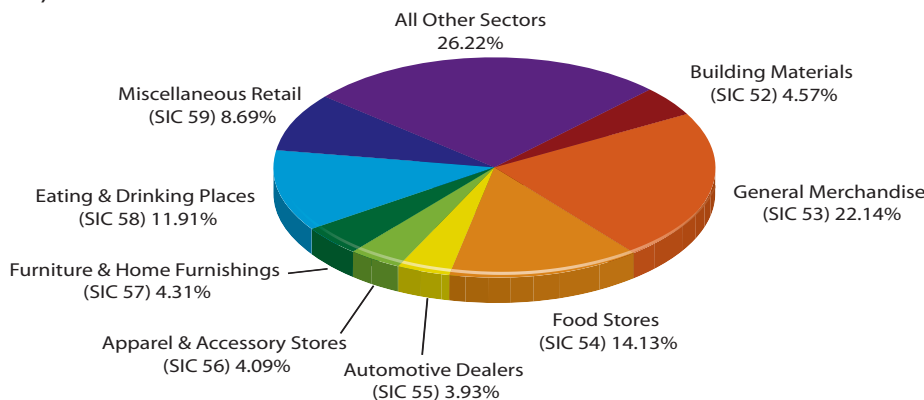
Weatherford city sales tax collections for the Retail Trade sectors (SIC 52-59) rose 0.71% (\$0.008 million) in 2nd Qtr 2008 from the previous quarter. Over the course of the past year, seven of the eight sectors managed an increase in their sector's city sales tax collections. The Automotive Dealers and Gasoline Service Stations sector (SIC 55) managed the greatest percentage gain with 29.35% (\$0.014 million), followed by the Furniture, Home Furnishings and Equipment Stores sector (SIC 57) with 17.57% (\$0.010 million) and the Miscellaneous Retail sector (SIC 59) with 14.11% (\$0.017 million).

Chart 1: Weatherford Retail Trade Sectors (SIC 52-59) City Sales Tax Collections



Source: Oklahoma Tax Commission

Chart 2: Proportion of 2nd Qtr 2008 Retail Trade Sectors (SIC 52-59) Sales Tax Collections to Total Sales Tax Collections in Weatherford



Source: Oklahoma Tax Commission

The Retail Trade sectors (SIC 52-59) make up 73.78% of the total sales tax collections in Weatherford during 2nd Qtr 2008. The General Merchandise sector (SIC 53) accounts for 22.14% of total sales tax collections; while all other sectors (excluding the retail trade sectors) make up 26.22% of total sales tax collections.

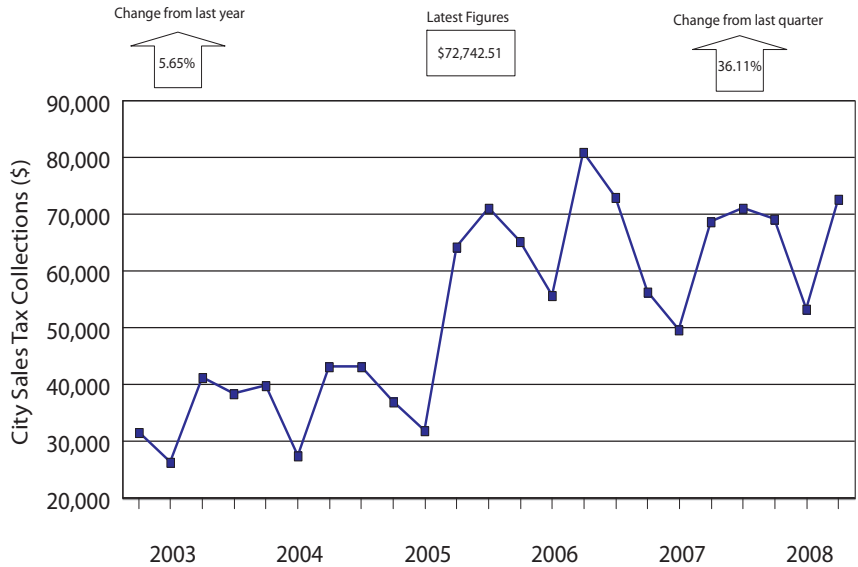
January 2009

Dr. Marvin Hankins, Director
100 Campus Drive
Weatherford, OK 73096



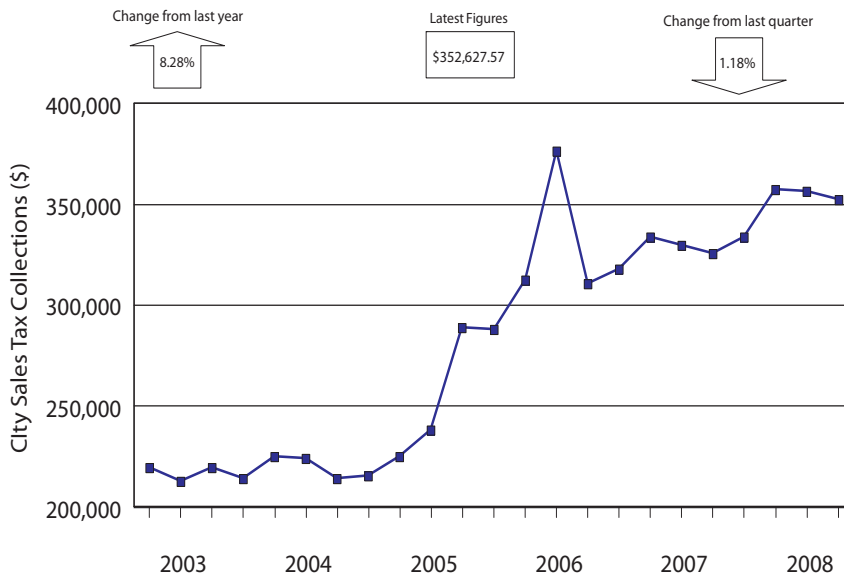
Weatherford building materials, hardware, garden supply and mobile home dealer city sales tax collections were up 36.11% on the quarter for a total city sales tax collection of \$72,742.51 in the sector. This increase is not unusual given the seasonality of the sector's sales. Over the course of the past year, city sales tax collections were up 5.65%. It is important to note that this SIC category includes lumber and other building materials dealers; paint, glass and wallpaper stores; hardware stores; retail nurseries, lawn and garden supply stores; and mobile home dealers.

Chart 3: Weatherford Building Materials, Hardware, Garden Supply and Mobile Home Dealer (SIC 52) City Sales Tax Collections



Source: Oklahoma Tax Commission

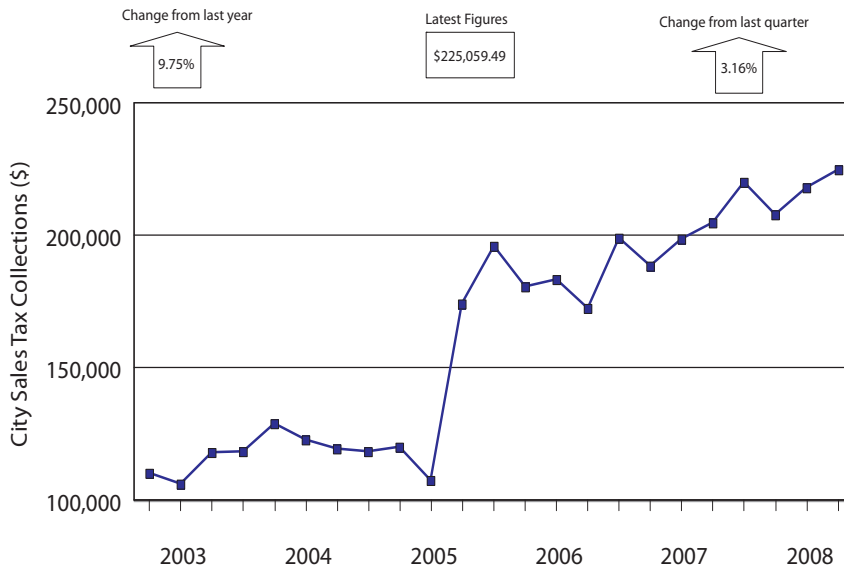
Chart 4: Weatherford General Merchandise Stores (SIC 53) City Sales Tax Collections



Source: Oklahoma Tax Commission

Weatherford general merchandise stores city sales tax collections were down 1.18% between 1st Qtr 2008 and 2nd Qtr 2008. When compared to the previous year, the sector's city sales tax collections were up 8.28%. This represents the third consecutive quarter that the sector's city sales tax collections have risen above \$350,000. The General Merchandise Stores sector consists of department stores; variety stores; and miscellaneous general merchandise stores.

Chart 5: Weatherford Food Stores (SIC 54) City Sales Tax

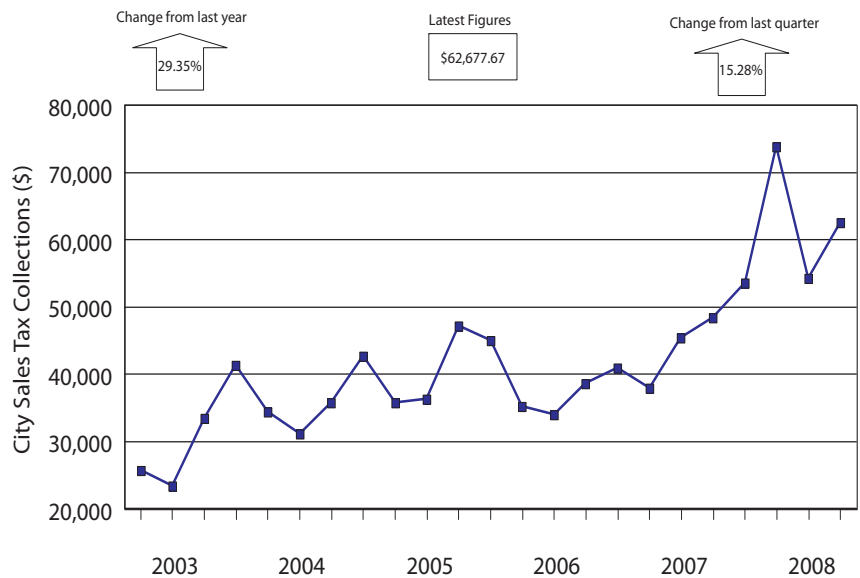


Source: Oklahoma Tax Commission

Weatherford food stores city sales tax collections rose 3.16% between 1st Qtr 2008 and 2nd Qtr 2008 and 9.75% between 2nd Qtr 2007 and 2nd Qtr 2008. This SIC sector includes grocery stores; meat and fish markets, including freezer provisioners; fruit and vegetable markets; candy, nut and confectionery stores; dairy products stores; retail bakeries; and miscellaneous food stores

Weatherford automotive dealers and gasoline service stations city sales tax collections were up 15.28% on the quarter for a total city sales tax collection of \$62,677.67 in the sector. Between 2nd Qtr 2007 and 2nd Qtr 2008, the sector's city sales tax collections were up 29.35%. It is important to note that this SIC category includes motor vehicle dealers (new and used); motor vehicle dealers (used only); auto and home supply stores; gasoline service stations; boat dealers; recreational vehicle dealers; motorcycle dealers; and automotive dealers, not elsewhere classified.

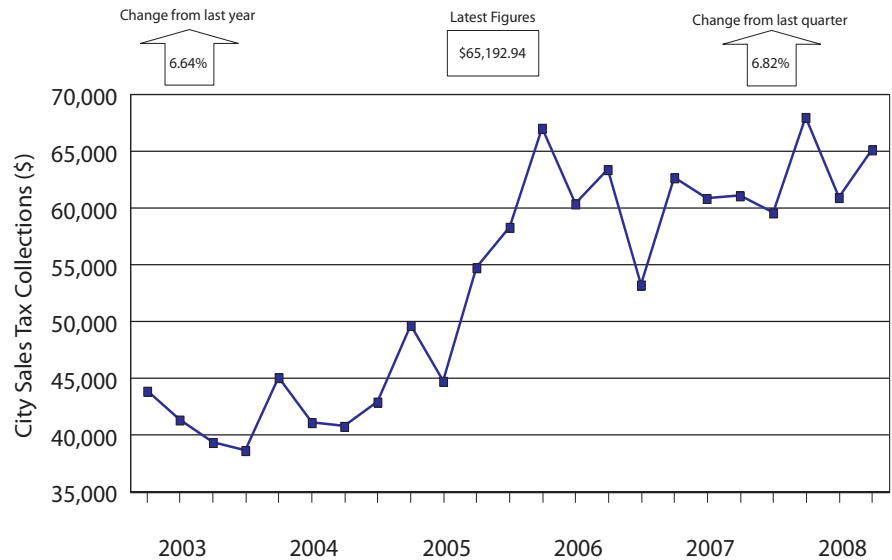
Chart 6: Weatherford Automotive Dealers and Gasoline Service Stations (SIC 55) City Sales Tax Collections



Source: Oklahoma Tax Commission

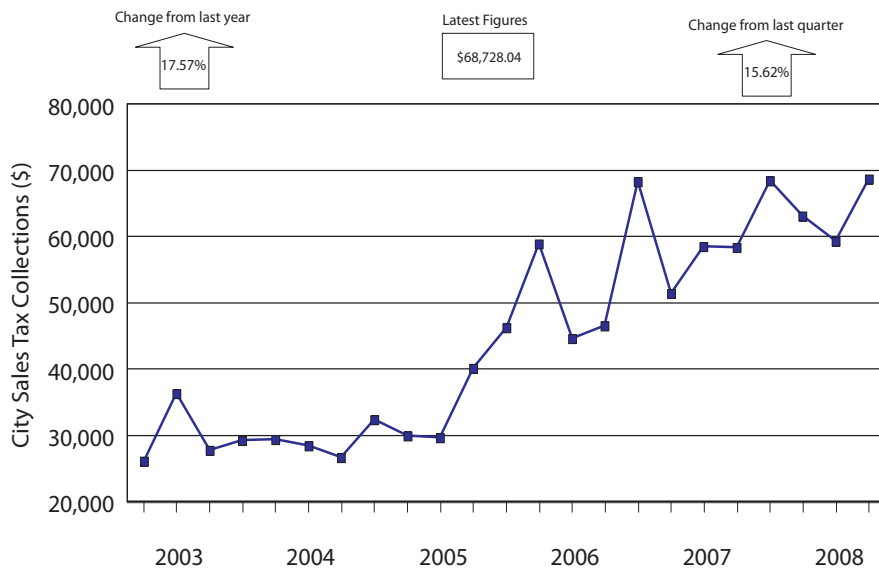
Weatherford apparel and accessory stores city sales tax collections rose 6.82% between 1st Qtr 2008 and 2nd Qtr 2008. When compared to the previous year, the sector's city sales tax collections were up 6.64%. The Apparel and Accessory Stores sector includes men's and boy's clothing and accessory stores; women's clothing stores; women's accessory and specialty stores; children's and infants' wear stores; family clothing stores; shoe stores; and miscellaneous apparel and accessory stores.

Chart 7: Weatherford Apparel and Accessory Stores (SIC 56) City Sales Tax Collections



Source: Oklahoma Tax Commission

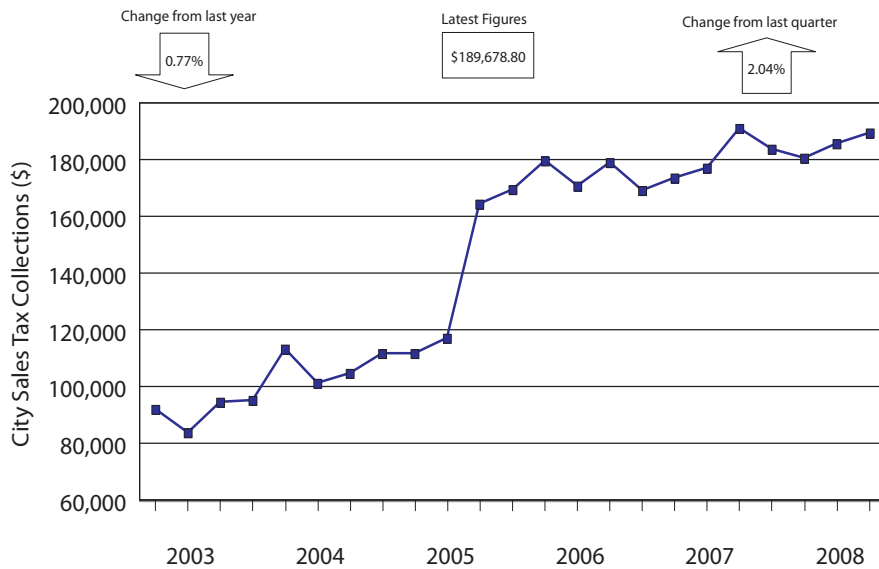
Chart 8: Weatherford Furniture, Home Furnishings and Equipment Stores (SIC 57) City Sales Tax Collections



Source: Oklahoma Tax Commission

Weatherford furniture, home furnishings and equipment stores city sales tax collections were up 15.62% from the previous quarter. Over the course of the past year, the city sales tax collections for the sector rose 17.57%. The Furniture, Home Furnishings and Equipment Stores sector consists of home furniture and furnishings stores; household appliance stores; and radio, television, consumer electronics and music stores.

Chart 9: Weatherford Eating and Drinking Places (SIC 58) City Sales Tax Collections

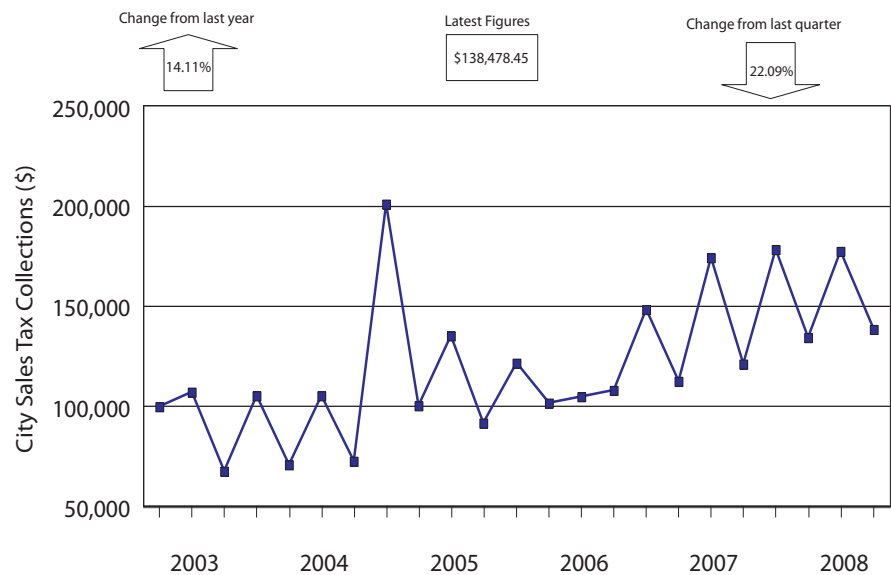


Source: Oklahoma Tax Commission

Weatherford eating and drinking places city sales tax collections rose 2.04% between 1st Qtr 2008 and 2nd Qtr 2008 and fell 0.77% between 2nd Qtr 2007 and 2nd Qtr 2008. This SIC sector includes eating and drinking places.

Weatherford miscellaneous retail city sales tax collections were down 22.09% from the previous quarter for a total city sales tax collection of \$138,478.45 in the sector. This decrease is not unusual given the fact that the Miscellaneous Retail sector can be highly erratic and irregular. The sector's city sales tax collections were up 14.11% for the year. The Miscellaneous Retail sector consists of drug stores and proprietary stores; liquor stores; used merchandise stores; miscellaneous shopping goods stores; nonstore retailers; fuel dealers; and retail stores, not elsewhere classified.

Chart 10: Weatherford Miscellaneous Retail (SIC 59) City Sales Tax Collections



Source: Oklahoma Tax Commission

Durable goods for the retail trade sectors (SIC 52-59) accounted for \$204,148.22 during 2nd Qtr 2008. This is an increase of 22.05% from the previous quarters total of \$167,260.57.

Nondurable goods totaled \$971,037.25 during 2nd Qtr 2008. This represents a decrease of 2.86% from the previous quarter.

Chart 11: Weatherford 2nd Qtr 2008 City Sales Tax Collections for the Retail Trade Sectors

Durable Goods	\$204,148.22
Building Materials, Hardware, Garden Supply & Mobile Home Dealer	\$72,742.51
Automotive Dealers & Gasoline Service Stations	\$62,677.67
Furniture, Home Furnishings & Equipment Stores	\$68,728.04
Nondurable Goods	\$971,037.25
General Merchandise Stores	\$352,627.57
Food Stores	\$225,059.49
Apparel & Accessory Stores	\$65,192.94
Eating & Drinking Places	\$189,678.80
Miscellaneous Retail	\$138,478.45

Source: Oklahoma Tax Commission