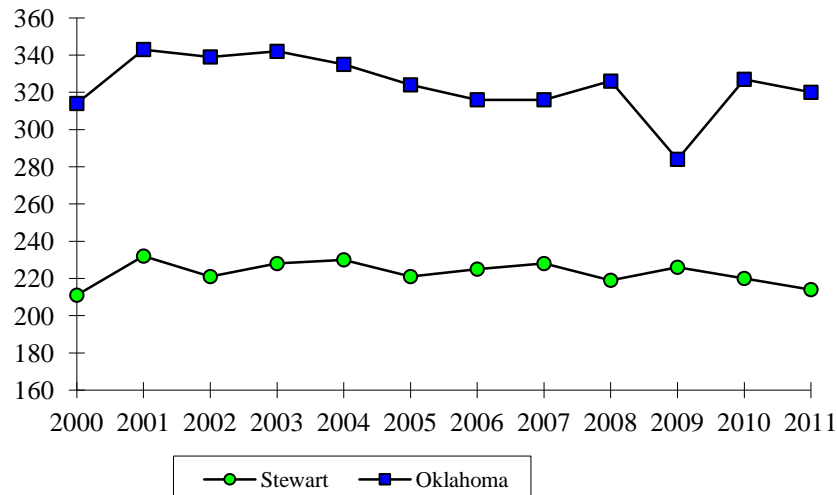


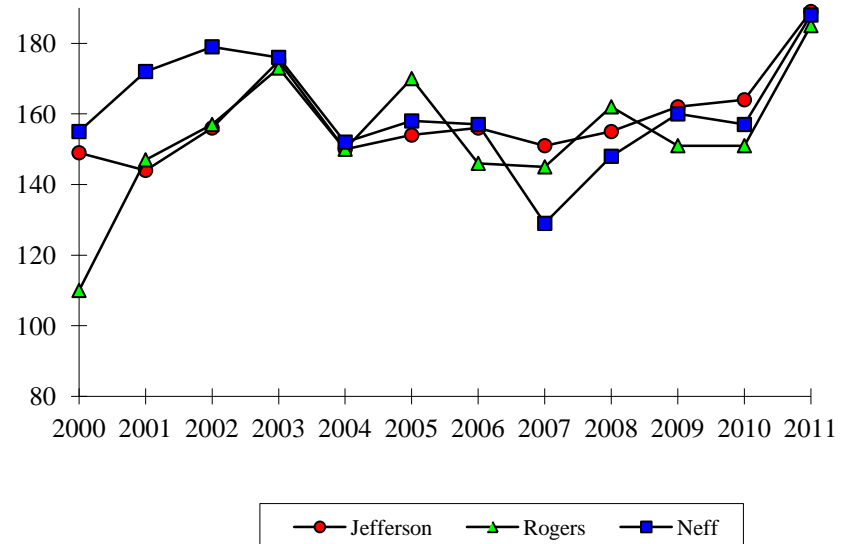
## FALL UNIVERSITY HOUSING CENSUS

| Fall      | Women's Residence Halls |          |       | Men's Residence Halls |        |      |       |
|-----------|-------------------------|----------|-------|-----------------------|--------|------|-------|
|           | Stewart                 | Oklahoma | Total | Jefferson             | Rogers | Neff | Total |
| 2000      | 211                     | 314      | 525   | 149                   | 110    | 155  | 414   |
| 2001      | 232                     | 343      | 575   | 144                   | 147    | 172  | 463   |
| 2002      | 221                     | 339      | 560   | 156                   | 157    | 179  | 492   |
| 2003      | 228                     | 342      | 570   | 175                   | 173    | 176  | 524   |
| 2004      | 230                     | 335      | 565   | 150                   | 150    | 152  | 452   |
| 2005      | 221                     | 324      | 545   | 154                   | 170    | 158  | 482   |
| 2006      | 225                     | 316      | 541   | 156                   | 146    | 157  | 459   |
| 2007      | 228                     | 316      | 544   | 151                   | 145    | 129  | 425   |
| 2008      | 219                     | 326      | 545   | 155                   | 162    | 148  | 465   |
| 2009      | 226                     | 284      | 510   | 162                   | 151    | 160  | 473   |
| 2010      | 220                     | 327      | 547   | 164                   | 151    | 157  | 472   |
| 2011      | 214                     | 320      | 534   | 189                   | 185    | 188  | 562   |
| Capacity* | 265                     | 392      | 657   | 198                   | 198    | 226  | 622   |

WOMEN'S RESIDENCE HALLS



MEN'S RESIDENCE HALLS



\*Capacity numbers are based upon double occupancy in each room.