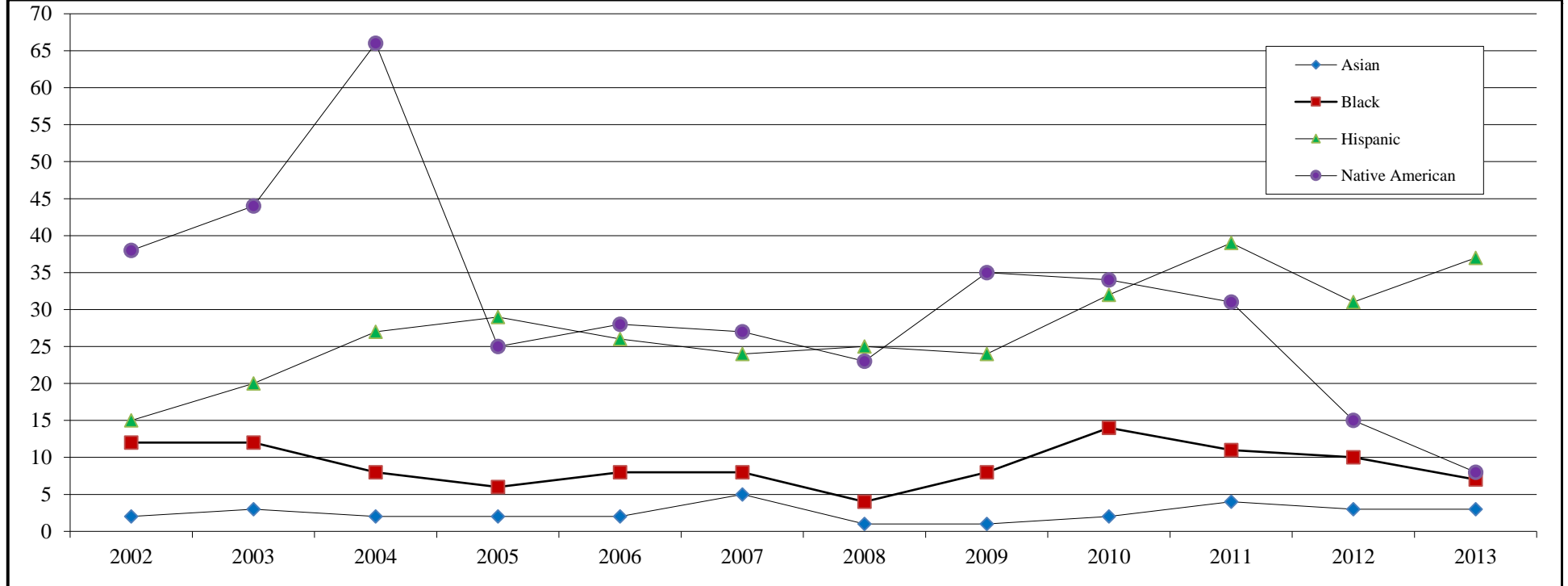


## ***TOTAL MINORITY ENROLLMENT - SAYRE CAMPUS***

Fall	Asian		Black		Hispanic		Native American		International		Hawaiian/Pacific		White		Two or More	
	#	%	#	%	#	5.0%	#	%	#	%	#	%	#	%	#	%
2002	2	0.4%	12	2.5%	15	3.1%	38	7.9%					416	86.1%		
2003	3	0.5%	12	2.2%	20	3.6%	44	8.0%					473	85.7%		
2004	2	0.3%	8	1.4%	27	4.6%	66	11.3%					482	82.4%		
2005	2	0.4%	6	1.1%	29	5.3%	25	4.6%					487	88.7%		
2006	2	0.4%	8	1.4%	26	4.7%	28	5.0%	1	0.2%	1	0.2%	492	88.2%		
2007	5	1.0%	8	1.5%	24	4.6%	27	5.1%	2	0.4%	0	0.0%	459	87.4%		
2008	1	0.2%	4	0.8%	25	5.0%	23	4.6%	1	0.2%	1	0.2%	444	89.0%		
2009	1	0.2%	8	1.5%	24	4.5%	35	6.5%	0	0.0%	1	0.2%	469	87.2%		
2010	2	0.4%	14	2.5%	32	5.8%	34	6.1%	1	0.2%	1	0.2%	468	84.5%		
2011	4	0.6%	11	1.7%	39	6.1%	31	4.8%	0	0.0%	3	0.5%	534	82.9%	22	3.4%
2012	3	0.6%	10	1.9%	31	5.9%	15	2.9%	2	0.4%	1	0.2%	442	84.4%	19	3.6%
2013	3	0.6%	7	1.4%	37	7.6%	8	1.7%	4	0.8%	0	0.0%	407	84.1%	18	3.7%



\*Beginning in 2011, student information was recorded and summarized differently to comply with new federal guidelines.